

Rivertide Suites

102 N Holladay Seaside, OR 97138

Call 877-871-8433 and ask for the **SeaPac Ham Operators Convention**

rates. A valid credit card will be required at the time of reservations. It is recommended to call sooner as guest rooms are not being blocked or held out of inventory. Individual guestroom cancellations must be received by **4:00PM Seven (7) days prior** to arrival date to avoid a cancellation fee equal to the first night's room revenue. Our guaranteed check in time is 4:00PM and check out is at 11:00AM.

Property Features Include:

Complimentary Continental Breakfast 7am-10am Daily

Manager's Reception 5pm- 6pm Daily. Enjoy complimentary snacks, soda, beer, and wine!

Indoor Pool and Hot Tub Open 8am-11pm (10pm-11pm Adult Swim)

Exercise Room 8am-11pm Business Center 7am-11pm

Enjoy a unique view of Seaside from the Crow's Nest, our rooftop deck.

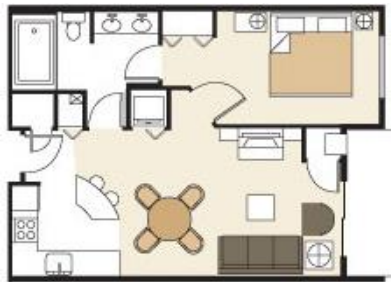
Located 0.1 miles from the Seaside Convention Center. Walking distance!

Room Amenities, Layouts, and Special Pricing:

All of our suites include a full kitchen with utensils, dining table, electric fireplace, washer & dryer, jetted tub, air conditioning, cable TV, DVD Player, hair dryer, iron, ironing board.



Studio/JUNIOR Suite
1 Queen / 1 Sofa Sleeper



One Bedroom KING Suite
1 King / 1 Sofa Sleeper



Two Bedroom Two Bath KING Suite
1 King / 1 Queen / 1 Sofa Sleeper

Rates are valid for up to four adults. Any additional adults will be \$20 plus tax per night.

Room Type / View	Thursday, May 30- Sunday, June 3, 2019
Studio / JUNIOR Suite Mountain View	\$194.00 + Tax per Night
1 Bedroom KING Suite Mountain View	\$204.00 + Tax per Night
1 Bedroom KING Suite River View	\$214.00 + Tax per Night
2 Bedroom 2 Bath KING Suite Mountain View	\$254.00 + Tax per Night
2 Bedroom 2 Bath KING Suite River View	\$264.00 + Tax per Night

**All room rates are net, non-commissionable and subject to the prevailing lodging tax.*