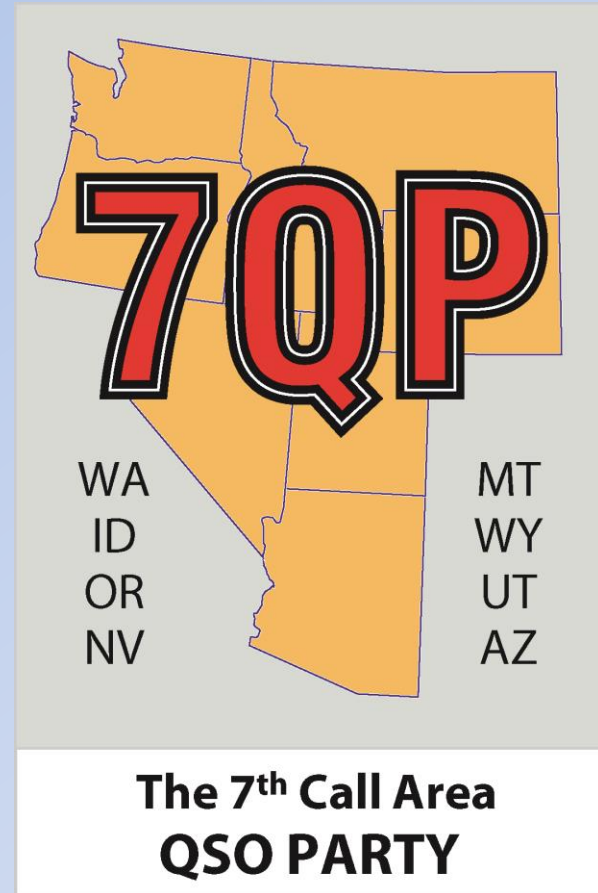


Behind the Scenes at 7QP

Dick Frey,
K4XU



What is a QSO Party?

- Us vs. Them:
 - The state makes QSOs with everybody
 - Outsiders make QSOs only with that state
- Score = QSO points x Multipliers
 - States, provinces and DX for insiders
 - Counties for outsiders
- Biggest QPs: CA, FL, 7QP, NEQP, GA, TX



Background

- Central OR DX Club had run the OR QSO Party (OQP) since <1995. It lacked something....
- July 2005: Decided to expand OQP to obtain “Critical Mass”.
- 7QP is 8 States and 259 Counties!



7QP really dates back to 1924!



Management

- Recruited chairman with experience running a QSO party (K5RC).
- Recruited captains and lieutenants for each of the 8 states
 - Serve on the steering committee.
 - Responsible for publicity, liaison with clubs, etc. in their state.
- CODXC members served as Rules chairman (K4XU), webmaster (WS7N), and software guru (K2DI).
- Set up 7QP mailing reflector as a communications channel among steering committee (and other interested folks).
- Decisions made by vote after discussion (usually consensus).



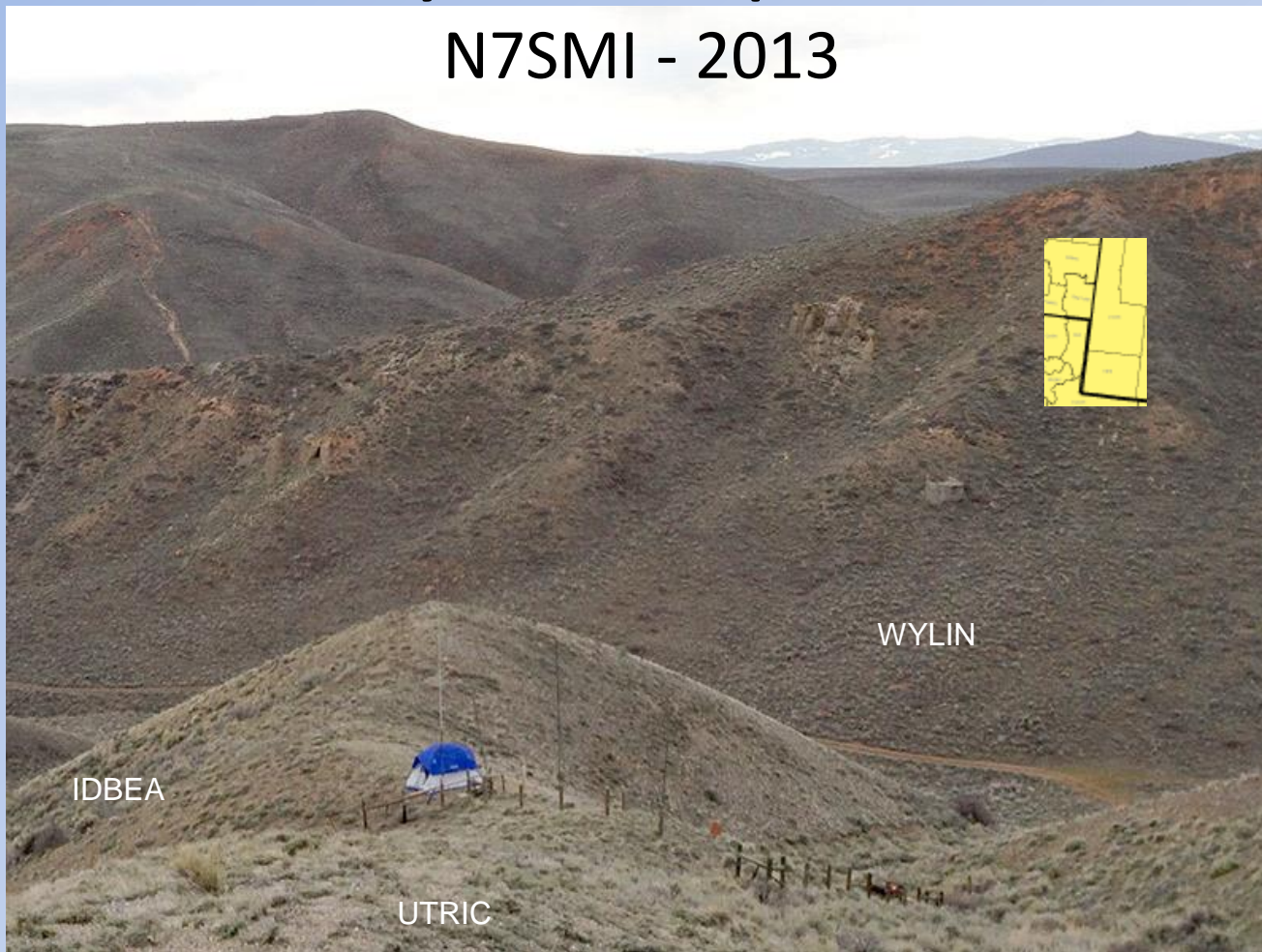
Rules

- Started with Oregon QSO Party rules.
- Entry categories – how many plaques and certificates?
- Date(s) and operating hours. Conflict/Cooperation with other QSO parties, Indiana and New England
- Multipliers
 - No 7th area county multipliers for 7s
 - Outward-looking
 - County-line-operation scoring.
 - CW vs. Phone scoring.
- State/County codes
 - Generated 3-character county codes, using 1st 3 letters, except
 - Kept most Salmon Run codes for WA.
 - AZ preferred mnemonic abbreviations.
 - Voted to use state-county (ORDES) rather than county-state (DESOR).



County Line Operation:

N7SMI - 2013



IDBEA

UTRIC

WYLIN

Other Details

- Set up a 7QP website, <http://7qp.org>
 - All you need to know, including planned operations by state/county, plus received logs, scores, etc.
- Publicity:
 - Sent notices to magazines, newsletters, Contest Calendars, WA7BNM Calendar, etc.
 - Posted a PowerPoint presentation on the 7QP website for use at club meetings, etc.
- Logging Programs:
 - 85% of submitted logs come from N1MM. N3FJP is #2.



- ORBAK: N7XU+ NK7J+ NK7U+ W7IXZ+ W9QL? WW7D
- ORBEN: AF7FV? AF7FX? K7BIK+ K7NHB? K7QHO? KA7CRA+ KD6FJI? KD6OJI KF7GGN KF7TFA? KG7BP? KG7JRA KU7N W7BLY WA7YXY+
- ORCLK: K7FO K7KFG K7VIK? KA4NGW KA7QGD? KB7F KC7AMI? KD7MSC+ KE7MSU KE7NVA+ KF7BS? KF7KXX? KI7Y+ N6TR N7EMC N7ENN? W7VTT? WA7GCS WB6WSQ WJ7U
- ORCLT: K6BSR K7FO K7KFG? KF7NPC N7GIV N7OU+ W7BU W7VN WB6WSQ
- ORCOL: AA7PT? K0JJ+ K2BSA? K7IR? KG7ASQ? KG7CFV? N7J+ N7OU+ N7VS? W6WHD W7CAR W7EZ W7IZ+
- ORCOO: K5KWA? K7NG K7OOS K7RG KF7WNS? NX1P? W7WHY+ W7WVF
- ORCRO: N7XU+ NA7LA W7PRA+
- ORCUR: KF7LNS? NX1P W1NDY W7VN?
- ORDES: K6APW+ K6PWY? K7CWQ K7JDB? K7LLC KB7W KD6OJI? KG7AV KK7ETC? KK7YC+ N6GC N7XU+ NK7V? NK7Z? W6JDB? W6RA+ W7Yaq+ WS7N+
- ORDOU: K7GT K7KO+ KE7GMU? KG7O? NK7Z NX1P W2JXN? W2VJN+ WB6SZL? WB7TIR
- ORGIL: K7AUO+ K7XYE? KT7G+
- ORGRA: N7XU+ WR7X+
- ORHAR: KF7HPT? KV7L N7XU+
- ORHOO: KT7G+
- ORJAC: AE7EQ? K7GT K7KO+ KB6QVI? KG7BP KI6WXM? KK7OI? N7SC? W7L W7LNG W7NER W7OQ+ WB7VUF?
- ORJEF: AA5TL+ K7TAN? K7TJR? K7TYE+ KD7RTE KG7BP? N7XU+ W6UDO W7OC? W7OMN?
- ORJOS: AA7E K7GT K7KO+ KE7VPQ? KG7DQA? KG7EOJ? N6ZM? N7LFX VE3LLV W7/VE3LLV W7ACA W7JOE?
- ORKLA: AE7IK+ K6AOM? K7KFG? K7RFO? KA7ARC KU7K+ N7IPG W6ABM? W7BRO+ WA7JZV
- ORLAK: AE7IK+ KE7QP? KF7TKR N7XU+ W7BRO+
- ORLAN: K7IGM K7TVL K7ZX+ KB7VIS? KE6KJD KF7RU KJ4EZ? KQ7X? N7IY N7JI W7BH? W7GF+ W7SY W7ZZZ WA7SE? WB6SKS?
- ORLCN: AA7LC? K7FD K7LOW? N7SG? W7ALX W7LL? W7PMF W7WLL
- ORLNN: AA5TL+ K7POS? K7ZX+ KA7KSP KD6OJI? KF7DVN? KK7OQ KQ7X? KX9T? W7SY? W7ZZZ WB6SKS?
- ORMAL: K7RHB KA7U N7XU+ WW7D
- ORMAR: AC7RE? K7DSZ? K7JJ+ K7JKM+ K7MJB? K7QHP? K7RHB? KB7NJV? KB7NRN? KF7RIV? KI7M+ N6TW NE7D+ W6ABM? W7CYA? WA7SHP
- ORMOR: KT7G+
- ORMUL: AC7KL? AD7OG+ AE7BT? K7EMI? K7POS KB7MH? KC7DDW? KF7DS KF7HNC KG7JLN? KM7Q KU7PDX+ N7OU+ N7TTQ N7VS W7MJM W7PDX W7TY? WB6OEE WI7N?
- ORPOL: K7QXG+ KB7CW? KE7EQA? N7BEF? N7WWH W7MTL
- ORSHE: KT7G+ NK7Z?
- ORTIL: KB7ADH KD7VIK+ NX1P? W6ABM
- ORUMA: KF7VXW? WB7RCL?
- ORUNI: KD7JG+ N7NSL+ W4PJS?
- ORWAL: KC7DM? KD7WP? KI7N? W7LNG? WB7EUX+
- ORWCO: KS7V+ KT7G+ WB7QXU
- ORWHE: W7PRA+
- ORWSH: AC7CR? AC7OR AD7JO K7GZP K7SO? K7VGQ KC7KNY KC7ZZB KE7CF KI7N KK7B? KN7K+ KU7PDX+ N2GL? N7BEF N7DWL? N7ELB+ N7QME? W7BVC? W7BVT W7JJC? W7SO W7TYN W7ZB WA7KGX WI7N WN6W WS7L+
- ORYAM: K0VIZ K2PO+ K5VP+ K5VPP? K7TLM K7XDX? K7ZS+ KD7WII KD7ZLF+ KI7NB? N7EMC? WB6ZGO? WB7RCL?

K2DI's 2014 County Report

+ = confirmed (log received)

? = unique

ORWSH: AC7CR? AC7OR AD7JO K7GZP K7SO? K7VGQ KC7KNY KC7ZZB KE7CF KI7N KK7B? KN7K+ KU7PDX+ N2GL? N7BEF N7DWL? N7ELB+ N7QME? W7BVC? W7BVT W7JJC? W7SO W7TYN W7ZB WA7KGX WI7N WN6W WS7L+



Logs

- We prefer electronic (Cabrillo) logs. 97% in 2014
- Paper logs are limited to 40 QSOs. Six in 2014
- Web page lists logs with entry classification as they are received to QSL and try to catch any errors.
- We fix some gross errors (sent location code, dates)
- Work with submitter to fix others (e.g., unreadable log file, missing information)
- Send return email to QSL receipt and classification



Scoring

- Homebrew scoring software by **K2DI**.
 - Linux-based (not Windows). Re-scores all logs.
 - Checks for dupes and bad state/county codes.
 - Checks for NILs, busted calls, etc.
 - No penalty for Dupes!
 - Generates summaries (county activity, logging pgms, etc.)



Prizes

- **Certificates:** first 3 places in each category and #1 in each state.
 - PDF certificates sent via email, a first for QSO parties, by 10 June, 5 weeks after event.
- **Plaques:**
 - About 35 plaques for first place in a Category
 - Sponsored by clubs and individuals, \$37 ea.
 - Managed by **WS7N**



Mobile!



2014 7QP Results

- 527 logs submitted
 - N1MM 85%, N3FJP 8%, All Others 7%
- 213 of 259 Counties covered



2014 Statistics

- Stations:
- 7th: 1245
- RoW: 6998
- TTL: 8243
- Logs: 427

- Counties:

St	#	on	@@	cfm	(@@: on, excluding uniques)
AZ	15	14	13	12	AZ is usually 100%
ID	44	40	38	27	
MT	56	29	20	8	
NV	17	13	12	9	Way to go Oregon!
OR	36	36	35	33	
UT	29	24	19	10	
WA	39	38	37	27	WA is usually 38/39
WY	23	20	20	13	An all-time high for WY!
---	---	---	---	---	
	259	214	194	139	



County Expeditions



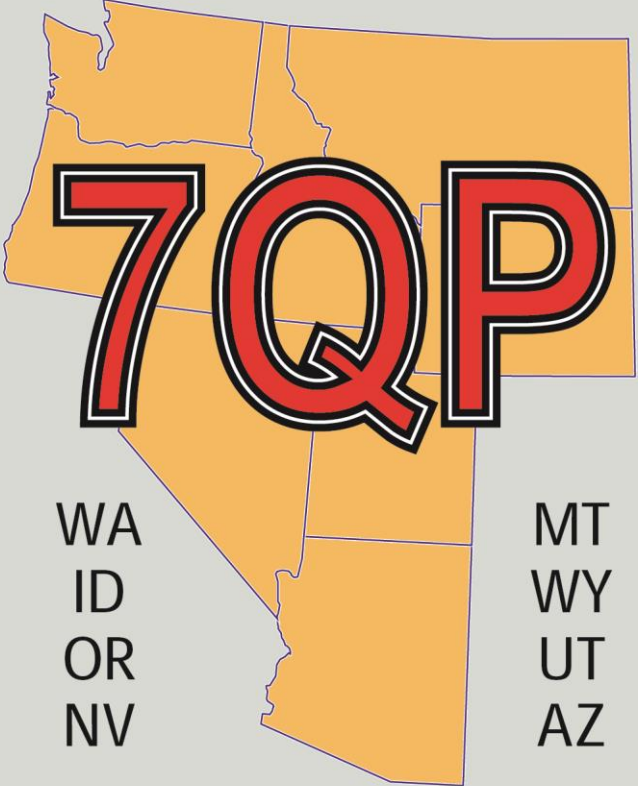
Jobs for Next Year

- Expand the Oregon email list to include all 2013 participants – not just logs rcvd. My job.
- Find a new NV sponsoring club & captain
- Write an article on 7QP for March '15 *NCJ*



2015 7QP
May 2-3

See you then!



WA
ID
OR
NV

MT
WY
UT
AZ

**The 7th Call Area
QSO PARTY
May 2-3 2015**

