



National Parks

ON THE AIR

2016

www.arrl.org

2016 – The Year of the Portable Operator

From IOTA to SOTA to NPOTA

“Elevating ham radio to new heights”

Guy Hamblen, N7UN aka nSOTA
(guest appearances of Rooster, Peanut, Steve/wG0AT)

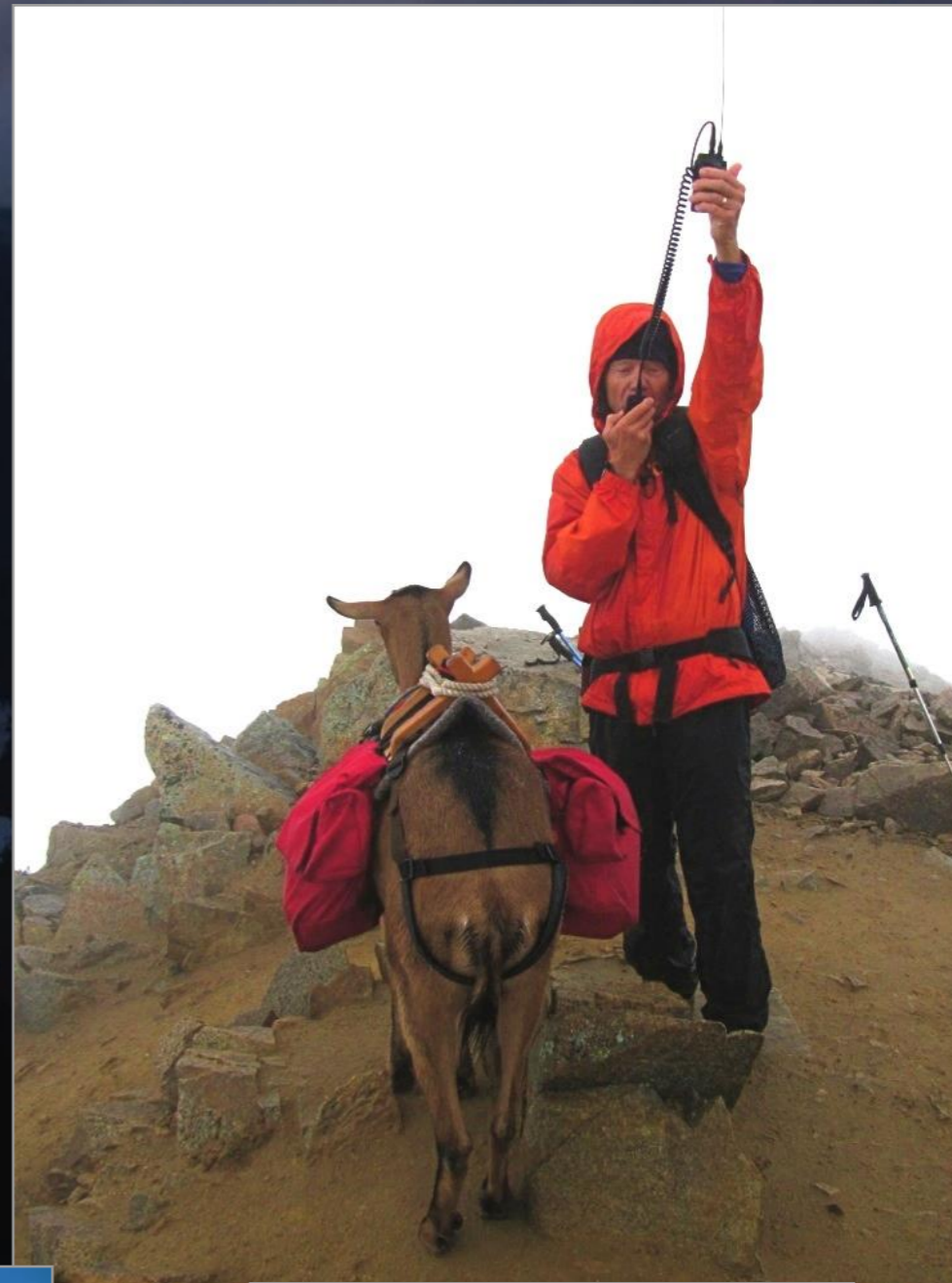
Who am I?



- **First licensed in 1963 as a novice then K7YYK, AA7QZ then N7UN**
- **9 Dxpeditions into the Carribean; last 5J0X in 2014**
- **Member of CWops and Frankford Radio Club**
- **9 band DXCC + 6m VUCC**
- **Top of the DX Honor Role (343 confirmed)**
- **Directly prepared SOTA data/docs (most of W7)**
- **Just completed Team effort to launch 5,300 summits in Japan and 18,400 in Alaska**
- **SOTA Awards: #1 Sherpa, 2x Super Shack Sloth, Mountain Goat #14 in North America**

Portable Operations

- How did SOTA start?
- What is NPOTA?
- How do I participate?
- Can I get any awards?
- How do I start activating and what equipment should I use?



How did SOTA start?



- Original idea of John, G3WGV and Richard, G3CWI
- Launched on March 2nd 2002
- Web based applications
 - More than 3.5 million QSO's in the SOTA Database
 - More than 9,800 registered users worldwide
 - Sophisticated web portal/reflector
 - Alerting, spotting, forum, etc.
 - Regional SOTA reflectors – NA SOTA on Yahoo
 - 60 DXCC countries and over 100,000 peaks in the SOTA database and ...growing fast!!
 - Nearly 52,000 qualified SOTA summits in North America!

2016 National Park Service Centennial Celebration

National Parks

ON THE AIR

2016

www.arrl.org

Photo W6PNG©



N4T

NATIONAL
PARKS
ON
THE
AIR

TR12
EM66GU

TRAIL OF TEARS COMMEMORATIVE PARK
HOPKINSVILLE, KENTUCKY

QSL Card KT9B



Commemorative Park, Hopkinsville, KY
23-30th April 2016

National Parks
ON THE AIR
2016
www.arri.org



Something for Everyone!



General SOTA Principles

- **One set of generic rules for everyone worldwide**
- **DX entities form one or more “Associations”
USA, Canada, Australia, Japan are main exceptions**
- **SOTA scoring is based on the elevation of the peak**
- **Activators, Chasers & SWLs are participants**
- **Various awards, Honor Rolls, etc.**
- **Totally web-based administration**

When is a peak not a SOTA peak?



This is a frequent question:

- A qualified SOTA peak is when:
 - Prominence is greater than 150 meters (492 ft) from surrounding peaks
 - This is NOT “how prominent a peak is” (HAAT)
- Peak qualification rules:
 - Vertical separation concept (492 ft prominence)

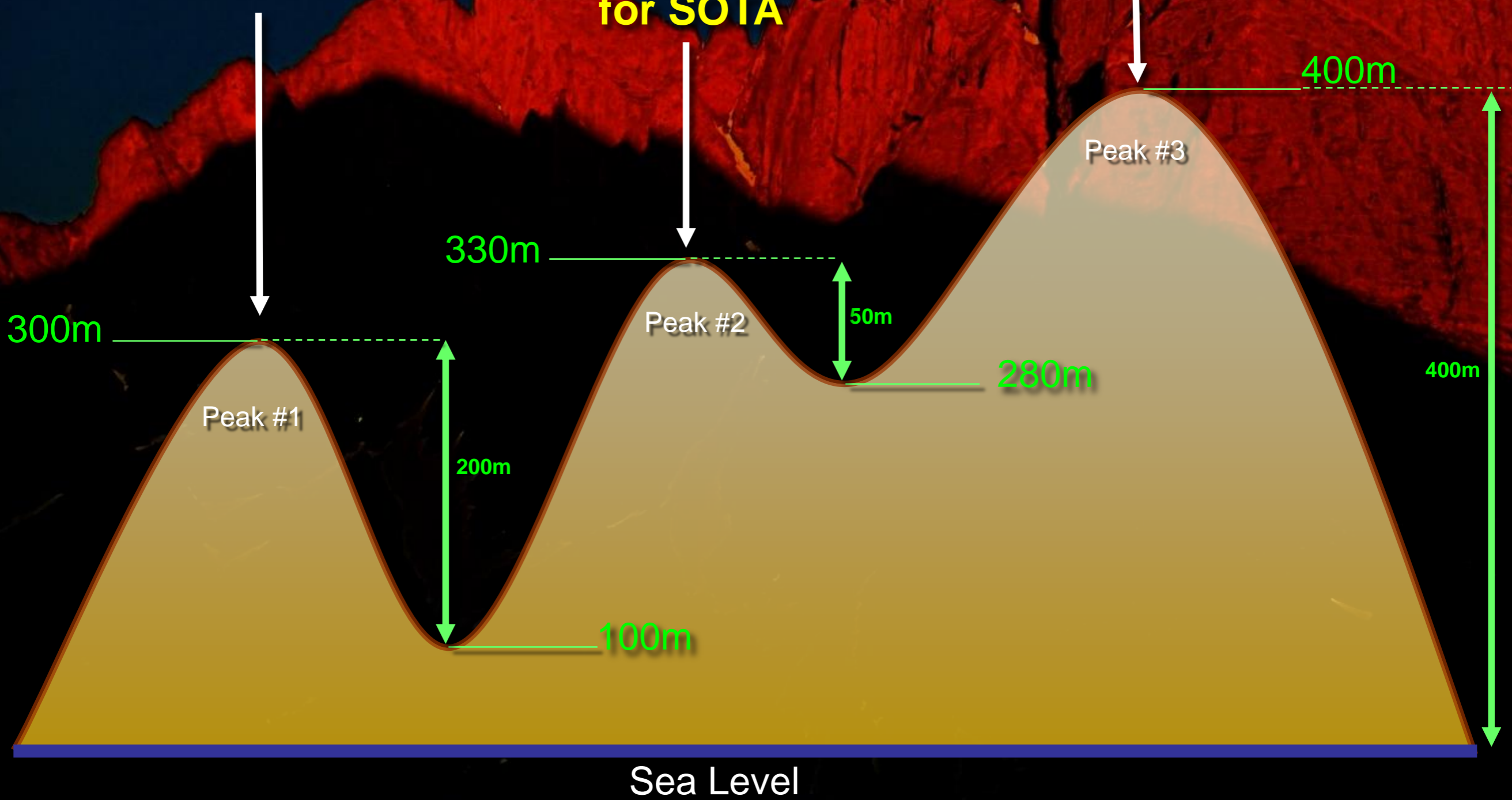
Prominence Definition



Qualifies for SOTA

**Does not
qualify
for SOTA**

Qualifies for SOTA



Differences: SOTA and NPOTA

An aerial photograph of a rugged coastline. In the foreground, a sandy beach curves along the edge of a dark blue ocean. Behind the beach, steep, light-colored cliffs rise up, showing signs of erosion and some sparse vegetation. The top of the cliffs is covered in green grass and a few trees. In the distance, more hills and a small white building are visible under a clear blue sky.

SOTA Sites:

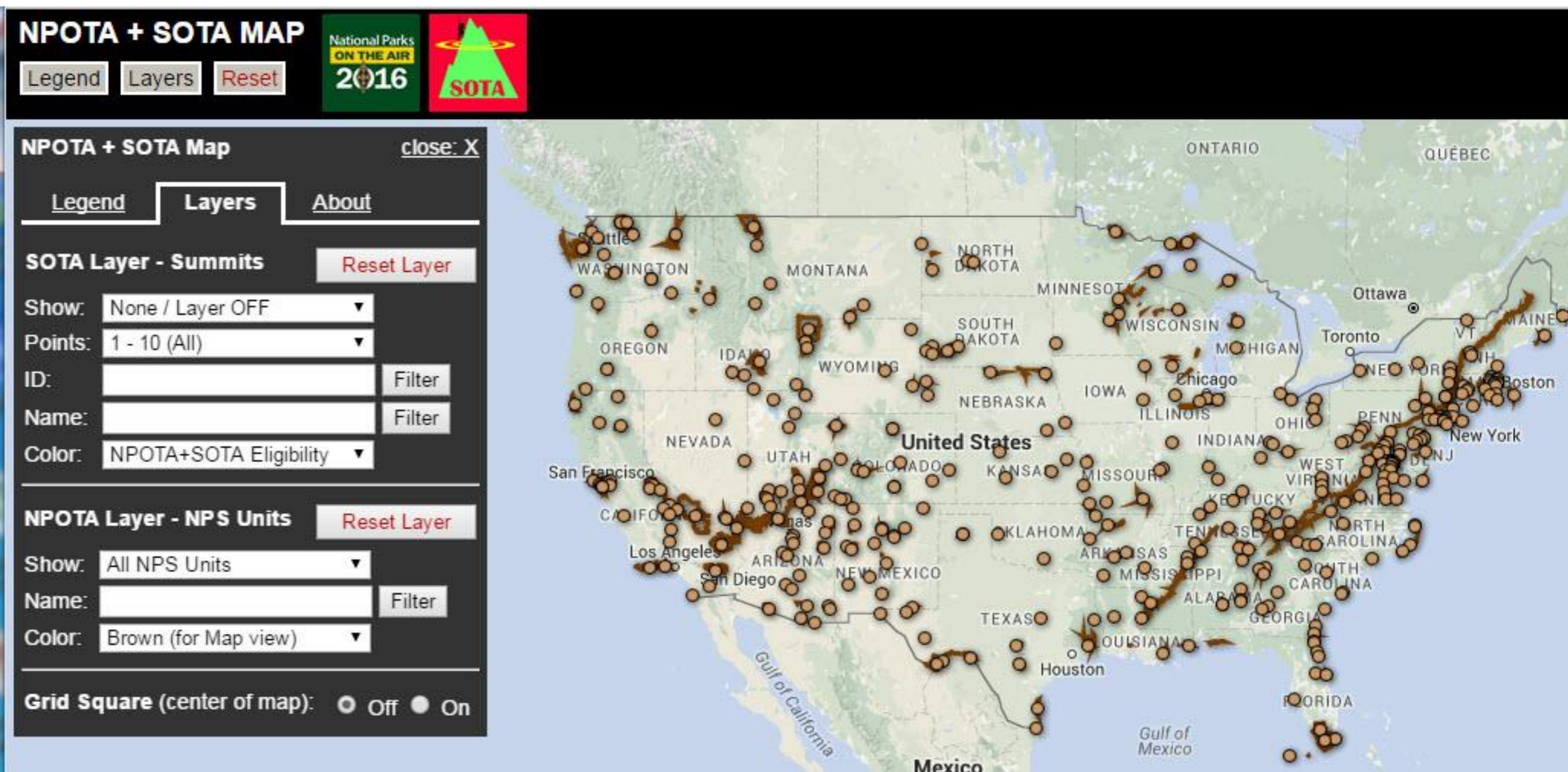
- 99% of sites are hike-ups
- 1% are drive-ups
- 0% use of your vehicle to support operation
- Incredible vistas

NPOTA Sites:

- 99% of sites are drive-ups
- 1% are short hikes (Historic Trails)
- 100% use of your vehicle
- Incredible history

Best of both worlds: SOTA + NPOTA

Some of the NPS Units



Google Maps mashup of NPOTA-SOTA sites
By KJ6WEG

SOTA Peaks in NPOTA Units



All SOTA Peaks in the USA



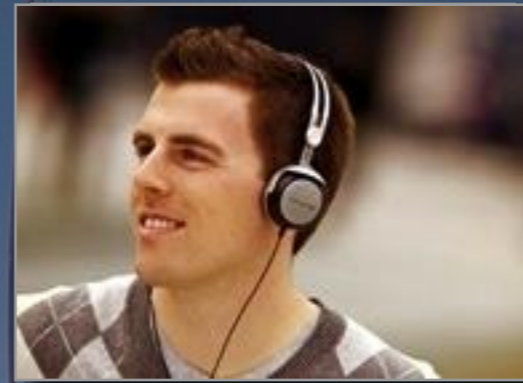
Participation Roles



Activators:
those who
“activate” a peak



Chasers: those who
chase the activator



Short Wave Listeners:
those who can
confirm a qso

Each group scores “points” for their participation. Points then total for awards.

Mt Huron, 14,003 ft

SOTA & NPOTA Bands and Modes

VHF+

- SOTA: A lot of 2m FM (HT)

HF

- SOTA: 45% CW, 36% SSB, 19% FM
- NPOTA: mostly SSB



Web Tools for SOTA - NPOTA



Summits On The Air

Home | Joining In | Associations | Rules & Guidelines | Awards | Database | SOTAwatch | About SOTA | Contact

Welcome to SOTA!

Summits on the Air (SOTA) is an award scheme for radio amateurs and shortwave listeners that encourages portable operation in mountainous areas. SOTA has been carefully designed to make participation possible for everyone - this is not just for mountaineers! There are awards for activators (those who ascend to the summits) and chasers (who either operate from home, a local hilltop or are even Activators on other summits).

SOTA is now fully operational in many countries across the world. Each country has its own Association which defines the recognised SOTA summits within that Association. Each summit earns the activators and chasers a score which is related to the height of the summit. Certificates are available for various scores, leading to the prestigious "Mountain Goat" and "Shack Slath" trophies. An Honour Roll for Activators and Chasers is maintained at the SOTA online database.

SOTA is designed to be compatible with other mountain users. Please see our [environmental statement](#) for details.

- [Learn how to get involved](#)
- [Catch up on real time information on who is activating what mountains!](#)
- [See a full list of Associations to find out which countries are involved](#)
- [See the Activator & Chaser Honour rolls at the SOTA Database](#)
- [Browse & Search through the full list of SOTA summits](#)
- [Find out more about the structure and management of SOTA](#)

10GHz activation on the The Cloud SP-015 by G3CWL.

HF Antenna on GW/NW-047 by MW0DX. See these photographs and more at the [SOTA Flickr Group](#)

Copyright © 2002-2009 Summits on the Air. Summits on the Air, SOTA and the SOTA Logo are trademarks of the Programme. Questions or comments about this site should be directed to the [webmaster](#). Participation in SOTA is at your own risk.

- www.sota.org.uk
The main SOTA site
- www.sotawatch.org
 - Alerts, spots and a forum
 - Register to participate
- NPOTA Facebook
- ARRL NPOTA sites



This page refreshes every 1 minute. Last updated **15:03:48** UTC.

Latest Spots

>> [more spots](#)

- Mon 14:54 **GW1INK/P** on [GW/SW-022](#) **5.3985 ssb**
Steve with his usual 59 signal (Posted by ON3WAB)
- Mon 14:49 **GW1INK/P** on [GW/SW-022](#) **5.3985 ssb**
(Posted by G4BLH)
- Mon 14:05 **HB9CKV/P** on [HB/GR-111](#) **3.746 ssb**
tks qso Hans (Posted by HB9AAQ)
- Mon 13:59 **G4OWG/P** on [G/SC-005](#) **5.3985 ssb**
(Posted by GW4BVE)
- Mon 13:24 **G4OWG/P** on [G/SC-005](#) **5.3985 ssb**
*In about 15 mins (Posted by G4OWG)

Upcoming Activations

>> [more alerts](#)

- Tue 08:30 **F5UKL/P** on [F/PO-146](#) **10.123-cw,14.061-cw,7.031-cw**
+/-30mn. Hope to meet you. (Posted by F5UKL)
- Tue 09:30 **OE/HA5AZC/P** on [OE/BL-011](#) **7.032-cw,145.525-fm**
(Posted by HA5AZC)
- Tue 11:00 **F6ENO/P** on [F/AM-330](#) **7.032-cw,7.099-ssb,10.115-cw**
AM-340 later, starting 5 day trip in F/AM, will try to alert (Posted by F6ENO)
- Tue 13:30 **G1OPV/P** on [G/WB-006](#) **145-fm,70-fm,433-fm**
Also 144 SSB if wx ok (Posted by G1OPV)
- Wed 11:00 **G1OPV/P** on [G/WB-015](#) **145-fm,70-fm,433-fm**
Also 144 SSB if wx ok (Posted by G1OPV)

Reflector Latest

[SOTA T Shirts, Sweatshirts and](#)
by GM4TOE, #19 by ON3WAB, 8mins ago

[SOTA NEWS SEPTEMBER 2009](#)
by G4SSH, #9 by M6WOW, 17days ago

[Elecraft K1 kit seeking a good](#)
by G14FLG, #4 by G8ADD, 7mins ago

[DD1LD-first Mountain Goat in C](#)
by DJ5KZ, #16 by G8ADD, 15mins ago

[2m Backpackers Contest](#)
by G3CWI, #35 by M3EYP, 54mins ago

[250+ Uniques](#)
by G3CWI, #10 by MMDFMF, 76mins ago

[wrong refernce !](#)
by HB9AFI, #28 by G4OIG, 5hrs ago

[O/T - Radio at school](#)
by M1EYP, #44 by M1EYP, 18hrs ago

[Worldwide SOTA first!](#)
by M0LKB, #2 by DL3SBA, 19hrs ago

[Video Upload](#)
by MM0ROV, #11 by G3CWI, 21hrs ago

[triple French SOTA F/AM-256-](#)
by F5HTR, #2 by F6ENO, 22hrs ago

[Don't panic !!!](#)
by G3VQO, #2 by GW7AAV, 25hrs ago

>> [more topics...](#)



Summit Information for W0/FR-019

Sundance Mountain - 3792m, 6 points

Association: USA(W0) Region: CO-Front Range

Latitude: 40 24 30 N, Longitude: 105 42 38 W

Today's Sunrise: 13:09 UTC, Today's Sunset: 00:28 UTC

To see the distance and bearing of this summit from your home QTH, please enter your home longitude and home latitude on the Edit Account form.

[Google Map](#) | [Open in Google Earth](#)

Resources

Feel free to add external links [↗](#) and articles relating to this summit that activators and chasers may find useful or interesting. Please read the disclaimer notice at the bottom of the page.

[Trip Report for Sundance](#) (Submitted by N7UN on 14 Aug 2011))

[Add new external link](#) | [Add new article](#)

DISCLAIMER: The SOTA programme and its Management Team is not responsible for the content of external internet sites or for information added by third parties to this website. Please contact the SOTA Management Team if you have concerns about submitted content. The existence of information relating to a particular location does not confer or imply any right of access. Participation in the SOTA Programme is at the risk of the participant.

Summit Activity

Total Activations: 1

First Activated by:

NSOTA on 04 Aug 2011

11 QSOs on these bands:

20m	11	100%
-----	----	------



- Traffic
- Photos
- Weather
- Terrain
- 40.40829849243... ● ✕



Sunjance Mountain

34

Trail Ridge Rd (Closed winters)

34

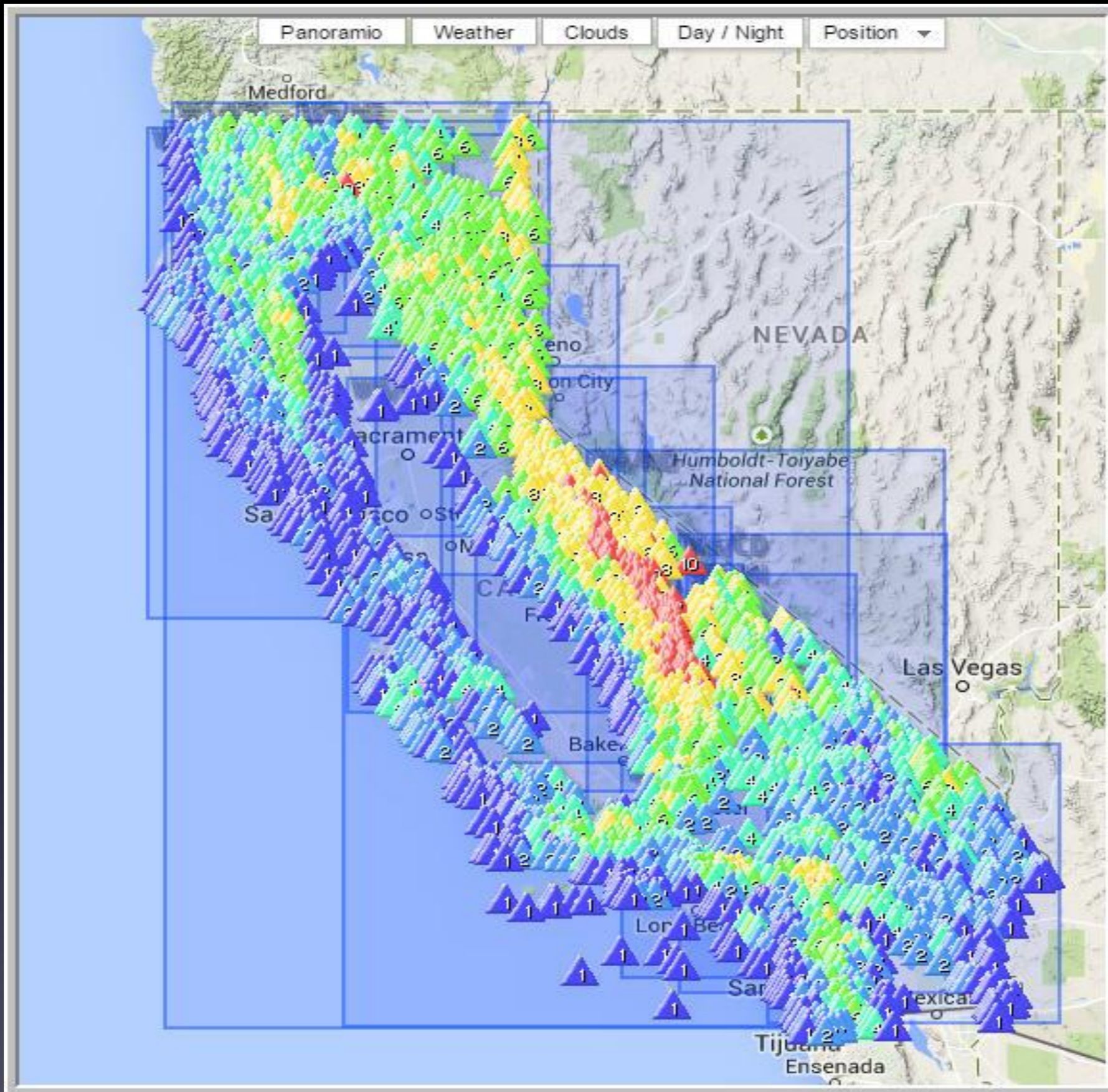
Trail Ridge Rd (Closed winters)

34

Trail Ridge Rd (Closed winters)

1000 ft
200 m



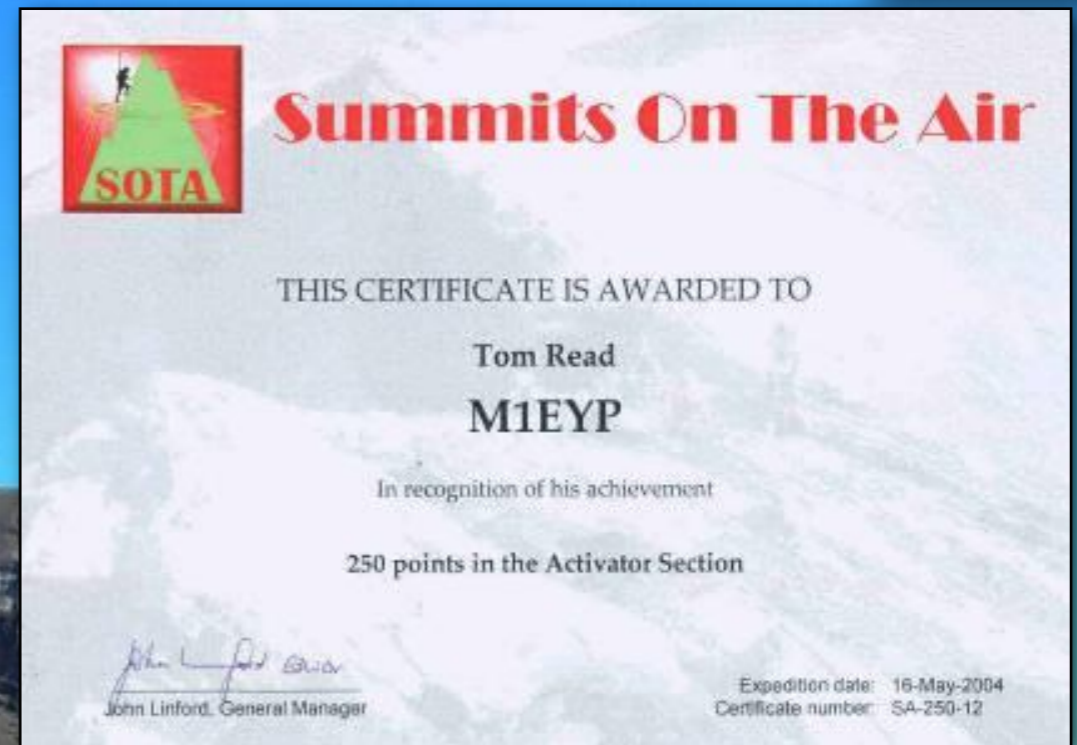


3700+ SOTA Summits

SOTA Awards



- **Certificates**
- 100, 250 and 500 points
- **Mountain Goat**
 - 1000 activating points
- **Shack Sloth**
 - 1000 chasing points
- Association awards
- Further certificates at 2500, 5000, 10000 points



Uncompagne 14,309 ft



SOTA Activator Equipment

- It's all a lot easier these days!
 - Equipment is smaller, lighter and more efficient
 - Battery technology has improved immensely
 - APRS and Cell phone SMS msg for self-spotting
- Typical activator radios
 - MTR-series, FT817, LNR, Elecraft KX3!
 - Various handy-talkies for 2m-70cm FM

Typical SOTA Antennas



Possible SOTA and NPOTA Side effects



- Possibly improve your health by getting you moving, walking, or maybe even hiking And possibly meet some new friends who like to do same?
- It'll for sure improve your equipment's readiness. (go-bag)
- It'll improve your operating skills
- Improve you knowledge and awareness of the history, geography and topography of your area/region.
- You'll no doubt see trees, planets, flowers and wildlife no seen before!



Have a go!



- **You don't have to be a mountaineer for SOTA!**
 - Some summits where you can almost drive to the top
 - You can participate from your shack
- **But if you are a hiker...**
 - There are many first expeditions yet to be done
 - It's a good excuse to enjoy the outdoors on the summit looking at the views
- **There's fun to be had after NPOTA**



Summary

- SOTA's program promotes Activating, Chasing and it's addictive!
- NPOTA gets you to historical places of great significance
- Most of all have FUN!





Community!



Questions?

n7un@arrl.net

www.sota.org.uk

www.sotawatch.org

Yahoo.groups.com
search for "nasota"



Links and Credits:

- SOTA: www.sota.org.uk
- NPOTA: www.arrl.org/npota
- Maps: www.spinmap.com/npota-sota/map.html
- SOTA maps: www.sotamaps.org
- NPOTA Facebook:
www.facebook.com/groups/NPOTA

Some photos by:

- wG0AT: plus.google.com/s/wg0at
- W6PNG: w6png.wordpress.com
- KT9B QSL card for N4T

(All photos used with permission)