

Amateur Radio Emergency Service®



Computer Aided ARES® Reporting (and more)

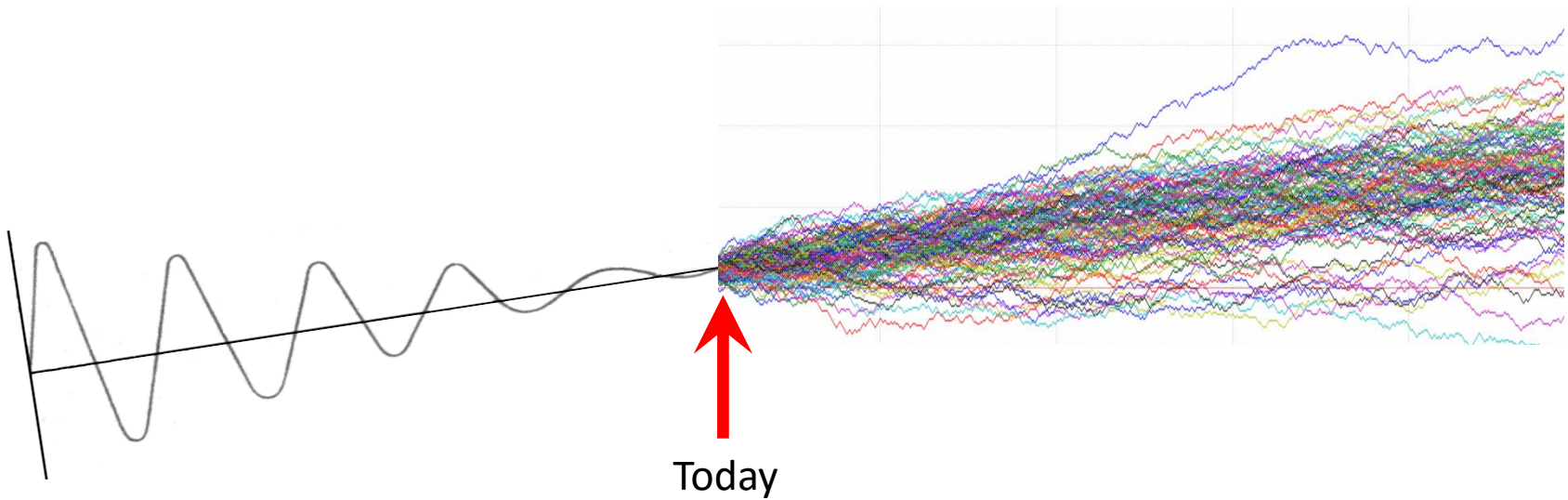
“Idaho ARES”

Presented to ARRL Northwestern Division Convention
06/04/16

Ed Stuckey (AI7H)
Idaho ARRL Section Manager
ai7h@arrl.net

Idaho ARES Profile

We've Had Our Ups and Downs



ARES Activity in Idaho

Idaho ARES Profile

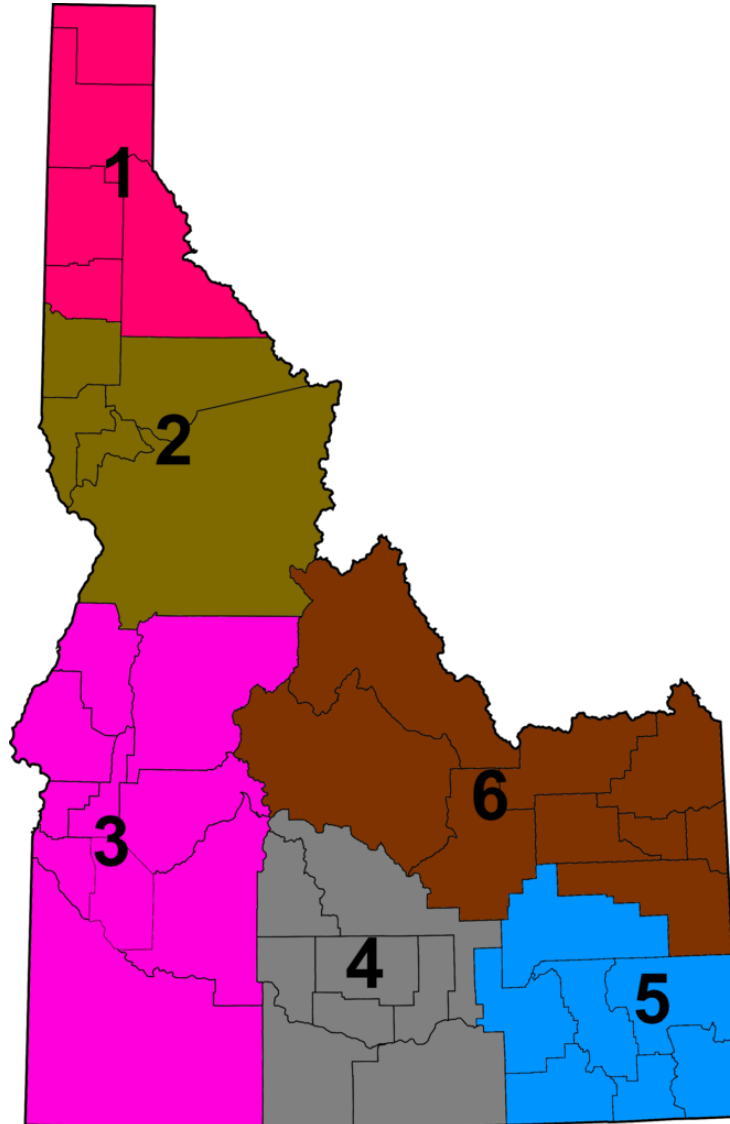
Idaho Section = State of Idaho

ARES Districts = Idaho State Police Districts (6)

Served Agencies = County Emergency Managers (44)
and Tribal Emergency Managers (4)

ARES Currently Active in 25 of 44 Counties
(in support 82% of population)

Idaho ARES Profile



Idaho ARES Profile

SEC Appoints “**Management Grade**” EC’s

Requires Written Resume – “Why do you want the job?”

Telephone or in-person interview

- “Do you get along with County Emergency Manager?”

SEC Calls County EM to validate relationship with EC

The “RACES” Situation

We Call ourselves an “ARES/RACES” Section

3 (of 44) Counties have RACES Organizations
(RACES Operators work in EOC’s)

We make sure that the ARES EC is the RACES RO

Technical Side: Where We Started

What Do Our EC's Need?



Idaho ARES – Early Information Gathering

What Do Our EC's Need (Member Profiles)?

Call Sign

License Class

Equipment List

Sustainability

More?

Could be maintained on a Spreadsheet (Huge Discussions)*

The Arizona ARES Database + Website (2009)

Would Fulfill Idaho ARES needs “plus more”

Capture ARES member Data

(More Data Elements)

Members enter their own data via Website

ARES Management can view all Members

(Useful for Organizing Mutual Assistance Teams)

Arizona ARES Database Deficiencies

No Activity Reports

No “Communication With Members” Capability

Somewhat Fragile

Website Security Concerns

ARES Database “Not Big Enough” (2011)

Begin Search for New Database or Developer

Fuzzy Requirements:

Appropriate Data Collection on ARES Members

“News Distribution”

Collect Data for Field Reporting

“100%” Dependable

Better Security

Easy to Use

The Idaho ARES – “IEMA” Affiliation (2013)

IEMA = Idaho Emergency Managers Association

Idaho SM and SEC Invited to IEMA State Convention

Presented Idaho ARES

They “Embraced” us (sort of)

IEMA Did not support statewide IEMA/ARES MOU

IEMA Did not support standardized statewide Idaho ARES ID Cards

Idaho Served Agencies on 700 Mhz (2013)

Reduced Served Agency Need for Traditional Support

Idaho ARES needs to re-tool

- Learn to Speak Alphabet Soup (“EM talk”)
- ICS Standardized Coursework for Members
- Develop Digital Mode(s) Proficiency
- Point to Point HF Capability
- More...
- Maintain Traditional Capabilities

New Idaho ARES Website and Database (2013)

Found A Developer!

Ray Montagne (W7CIA) – Developer

Retired from a major hi-tech company

A stickler for detail

A tireless taskmaster

Huge individual effort

New Idaho ARES Website and Database (2013)

Project Management

Mike Meier (WB7RBH)(ARRL Idaho SEC) – Project Manager

A stickler for detail

A tireless taskmaster

Huge individual effort

Ed Stuckey (AI7H)(ARRL Idaho SM) – “The Breaker” (Testing)

“Let’s Go First Class” (even without money)

“Keep It Simple!”

New Idaho ARES Website and Database (2013)

“Real” Specifications Development

Expand ARES Member Profile

Make Website Educational and User Friendly (more hits)

Use database as a communications tool (broadcast e-mail)

Add SEC Reporting Tool (Data for “FSD-212”)

Extensive EC data roll-up capability (Replace “FSD-96”)

Many Other Reports

Website security enhancement

Yes it takes forever

New Idaho ARES Website and Database

www.idahoares.info


(companion site: www.idahoarrl.info)

www.idahoares.info home page


The screenshot shows a web browser window displaying the homepage of the Idaho Amateur Radio Emergency Service (ARES). The browser's address bar shows the URL www.idahoares.info. The page features a large banner with a scenic landscape background, the ARRL logo on the left, and the text "Idaho Amateur Radio Emergency Service" in the center. Below the banner is a dark blue navigation menu with dropdown menus for "Idaho ARES", "Activities", "Training", "Resources", and "Members". A light blue box contains a message about visiting the "Current News" page. Below that, a pink box provides information about the Cascadia Rising exercise. The main content area is titled "About Idaho Amateur Radio Emergency Service (ARES®)" and includes a map of Idaho divided into six districts, each with a corresponding region. To the right of the map are several paragraphs of text explaining the ARES organization, its structure, and membership. At the bottom, there is a table of Districts and Regions, followed by a section titled "Amateur Radio Operator Qualifications" which includes a link to a registration page. The Windows taskbar at the bottom shows the date and time as 9:50 PM on 3/13/2016.

Idaho ARES ▾ Activities ▾ Training ▾ Resources ▾ Members ▾

For current Idaho ARES News, please be sure to visit the [Current News](#) page that is located under the **Idaho ARES** menu. The [Current News](#) page includes information that is critical to obtaining access to, and maintaining your account (see article #1).

 Information on the Cascadia Rising exercise, which will occur in June of 2016, can be found by clicking [here](#).

About Idaho Amateur Radio Emergency Service (ARES®)



CLICK ON MAP FOR LARGER VIEW IN A NEW WINDOW

The Amateur Radio Emergency Service ([ARES](#)) is made up of Amateur Radio operators, who have registered their equipment and qualifications with ARES. These amateur radio operators provide volunteer communications services in times of disaster or civil emergency.

The ARES national organization is comprised of smaller regional organizations, each being within an [ARRL Section](#). This web page serves the Idaho ARRL Section, covering the entire state of Idaho and is managed by the Idaho ARRL Section Emergency Coordinator (SEC).

Idaho ARES is segmented into six districts, which are aligned with Idaho Bureau of Homeland Security Regions. Each Idaho ARES district may have a District Emergency Coordinator (DEC). Within each district, Idaho ARES is organized by counties, with each county having an assigned Emergency Coordinator (EC).

Idaho ARES members participate in NET (i.e. Network or on-the-air information gathering) operations, exercises and training. These activities may be organized at the statewide, district or county levels.

ARES is open to all Amateur Radio operators. Amateur Radio operators need not be a member of the ARRL to join ARES.

| District | Region |
|----------|---------------|
| 1 | North |
| 2 | North Central |
| 3 | South West |
| 4 | Central |
| 5 | South East |
| 6 | North East |

Amateur Radio Operator Qualifications

Any Amateur Radio licensee may [register](#) to become an Idaho ARES member. ARRL membership is not required to become a member of ARES. There are no registration fees or dues associated with ARES membership.

Amateur Radio operators may participate in training in order to obtain qualifications beyond that of holding an Amateur Radio license. Such qualifications will enable an Amateur Radio licensee

New Idaho ARES Website and Database

What It Looks Like

Public Section

Members Only Section

New Idaho ARES Website and Database

What It Looks Like

Public

Idaho ARES (About, News)

Activities (Scheduled Activities)

Training (ARRL, FEMA, NOAA)

Resources (Tutorials, Forms/Scripts, Environmental)

Contact us

Members Only

Members (Member Interaction)

Admin (Management Reports, “Field Reporting”)

New Idaho ARES Website and Database

What It Looks Like

Members Only Section

New Idaho ARES Website and Database

What It Looks Like

Member Add / Edit Profile Data

New Idaho ARES Website and Database

Member Profile (Personal Data, entered by Member)

Call Sign/ License Class/Name/Address/**Picture**

Contact info (Phone, **e-mail**)

Home Location Coordinates

Availability for Emergency Call-Out

Member of Law / Fire / Other Public Sector (?)

Vehicle description, License number

Miscellaneous Notes

ARES Position and Access Privileges

New Idaho ARES Website and Database

Equipment List (Entered by Member)

Portable Radios (5W): HF, VHF, UHF, Data

Mobile Radios: Radio, Antenna, Mobile Computing

Base Station: Radios, Antennas, Modes, Internet,
Emergency Power, Weather Station

New Idaho ARES Website and Database

Qualifications List (Entered by Member)

Training: (ARRL, FEMA Courses)

Advanced Medical: Doctor, Nurse, ALS, BLS

Certified Medical: First Aid, AED, CPR

Radio Operation: (Net Operator, Skywarn)

Emergency Contact Info:

Change Password:

New Idaho ARES Website and Database

What It Looks Like

Administrative Tools

New Idaho ARES Website and Database

What It Looks Like

Admin Tools:

Edit A Member's Profile

Edit A Member's Equipment List

Edit A Member's Qualification List

Edit A Member's Net Participation

View A Member's Position and Privileges

View Contact Log

New Idaho ARES Website and Database

What It Looks Like

Roster and Reporting Tools:

EC Reports (EC Data In, SEC Data Out)

Roster Tools (Generate Roster, Org Chart)

Report Tools (Specific Type of Reports)

New Idaho ARES Website and Database

Sample EC Input (similar to "FSD-96")

The screenshot displays a web browser window with the URL https://www.idahoares.info/_ec_report.php. The page header features the Idaho Amateur Radio Emergency Service logo and a navigation menu with options: Idaho ARES, Activities, Training, Resources, Members, and Admin. A status bar indicates the user is logged in as Edward Stuckey, SM (ID: 7).

Idaho ARES - Submit Monthly Emergency Coordinator Report

This monthly report is to be submitted by the 2nd day of the month. When submitted on-line, the report is distributed, via email distribution, upward through the organizational hierarchy (i.e. CEC reports are distributed to the DEC and SEC while DEC reports are distributed to the SEC).

From entry should include data only for the month being reported. Totals are not entered in the form below as they will be automatically calculated when the form is submitted.

Emergency Coordinator Monthly Report

| | | |
|---|--------------------------------|---|
| Jurisdiction: | | |
| Report Period: | May | 2016 |
| Total ARES members: | <input type="text" value="0"/> | |
| Change since last month: | <input type="text" value="0"/> | Same As Previous Month |
| Local NET Name: | <input type="text"/> | |
| Total Sessions: | <input type="text" value="0"/> | |
| NTS liaison is maintained with the | (none) | NET |
| # Drills, Tests & Training events: | <input type="text" value="0"/> | Person hours: <input type="text" value="0"/> |
| # Public service events: | <input type="text" value="0"/> | Person hours: <input type="text" value="0"/> |
| # Emergency operations: | <input type="text" value="0"/> | Person hours: <input type="text" value="0"/> |
| # ARES operations: | <input type="text" value="0"/> | Person hours: <input type="text" value="0"/> |

Comments:

Edward Stuckey


Windows taskbar: 9:30 PM 5/12/2016

New Idaho ARES Website and Database


Aggregated EC report (SEC uses to prepare "FSD-212")

Idaho ARES - Submit Emer... x +

https://www.idahoares.info/_ec_report.php



Idaho Amateur Radio Emergency Service




LOGGED IN: Edward Stuckey, SM (ID: 7)

Idaho ARES ▾ Activities ▾ Training ▾ Resources ▾ Members ▾ Admin ▾

Idaho ARES - View A Monthly Summary Of Emergency Coordinator Reports

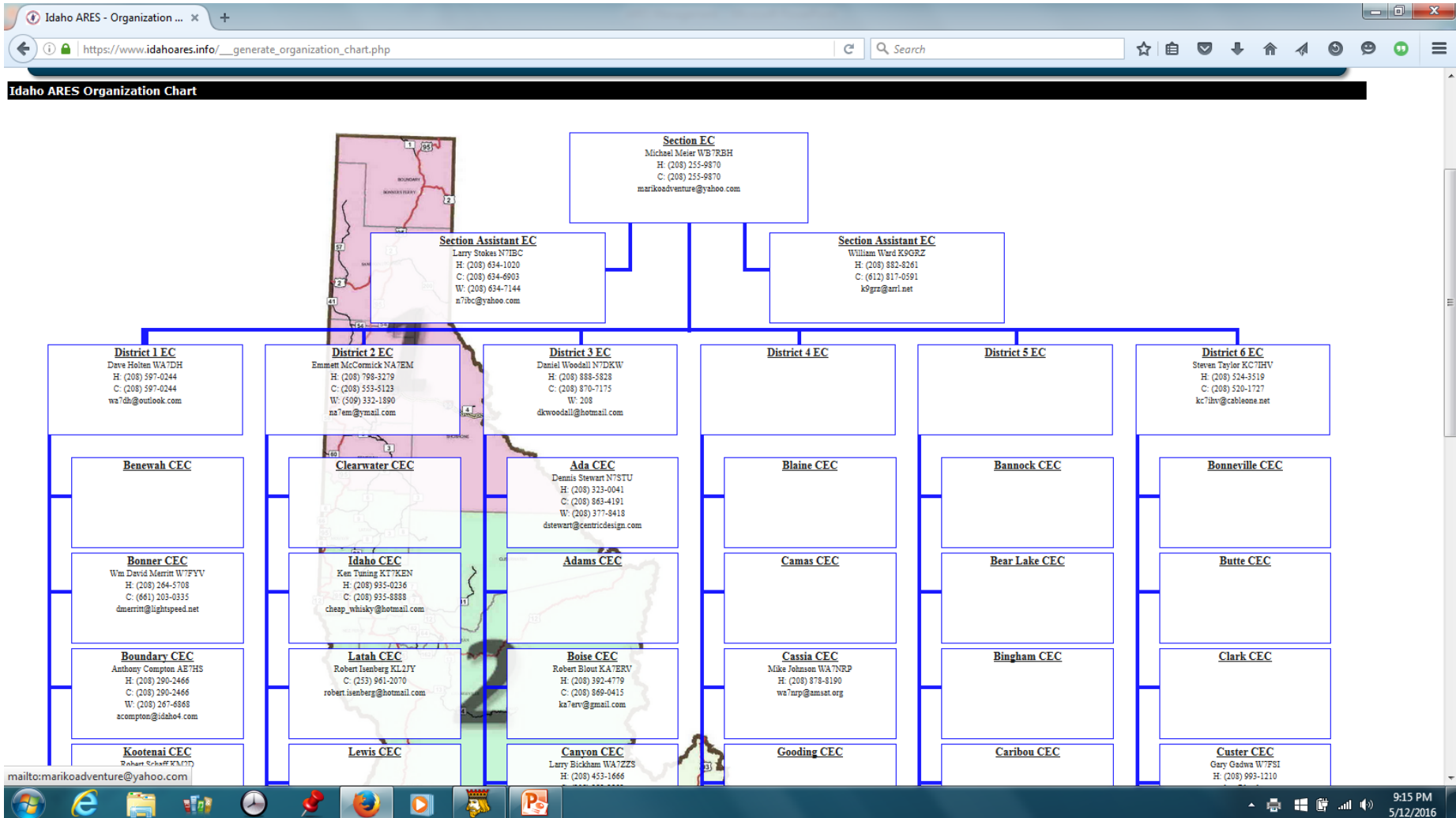
Idaho ARES -- Emergency Coordinator Report Summary - April, 2016
Report Generated May 13, 2016

| EC POSITION | EC REPORT FILED | EC REPORT AREAS MEMBERS | ROSTER ARES MEMBERS | MEMBER COUNT | MEMBERSHIP VARIANCE | NET OPS | | DRILL OPS | | PUBLIC SERVICE OPS | | EMERGENCY OPS | | ARES OPS | |
|-----------------------|-----------------|-------------------------|---------------------|--------------|---------------------|---------|-------|-----------|-------|--------------------|-------|---------------|-------|----------|--|
| | | | | | | COUNT | HOURS | COUNT | HOURS | COUNT | HOURS | COUNT | HOURS | | |
| 1: Ada County | ✓ | ✓ | 73 | 73 | OK | 2 | 4 | 1 | 25 | | | | | | |
| 2: Adams County | | | | | | | | | | | | | | | |
| 3: Bannock County | | | | | | | | | | | | | | | |
| 4: Bear Lake County | | | | | | | | | | | | | | | |
| 5: Benewah County | | | | | | | | | | | | | | | |
| 6: Bingham County | | | | | | | | | | | | | | | |
| 7: Blaine County | | | | | | | | | | | | | | | |
| 8: Boise County | | ✓ | | | | | | | | | | | | | |
| 9: Bonner County | ✓ | ✓ | | 14 | -14 | | 4 | 1 | 36 | | | | | | |
| 10: Bonneville County | | | | | | | | | | | | | | | |
| 11: Boundary County | ✓ | ✓ | 13 | 19 | -6 | | 4 | 2 | 15 | | | | | | |
| 12: Butte County | | | | | | | | | | | | | | | |



Windows Taskbar: 9:36 PM 5/12/2016

New Idaho ARES Website and Database Org Chart



New Idaho ARES Website and Database

A Sample Roster

Idaho ARES - Generate A R... x +

https://www.idahoares.info/___generate_roster.php

LOGGED IN: Edward Stuckey, SM (ID: 7)

Idaho ARES ▾ Activities ▾ Training ▾ Resources ▾ Members ▾ Admin ▾

TIP: When printing a roster, please select landscape orientation in your printer settings for best results.

Idaho ARES -- Digital Modes Roster

Roster Generated May 13, 2016
Search Criteria: District, Active Member

| # | CALL | ARES | FIRST | LAST | COUNTY | DISTRICT | POSITION | PORTABLE HF | | | | | MOBILE HF | | | | | BASE HF | | | | | | | | | | | | | | | | | | | | | |
|---------------|------------------------|------|---------|---------------|----------|----------|----------|-------------|------|--------|-------|------|-----------|------|--------|-------|------|---------|-----|------|--------|-------|------|---------|---|---|---|---|---|---|---|---|---|---|---|---|---|---|---|
| | | | | | | | | PSK | MT63 | OLIVIA | NBEMS | WL2K | PSK | MT63 | OLIVIA | NBEMS | WL2K | PACTOR3 | PSK | MT63 | OLIVIA | NBEMS | WL2K | PACTOR3 | | | | | | | | | | | | | | | |
| | | | | | | | | | | | | | | | | | | | | | | | | | | | | | | | | | | | | | | | |
| 1 | AF7JX | 427 | Jeff | Haney | Bonner | 1: North | OP | ✓ | ✓ | ✓ | ✓ | ✓ | ✓ | ✓ | ✓ | ✓ | ✓ | ✓ | ✓ | ✓ | ✓ | ✓ | ✓ | ✓ | ✓ | ✓ | ✓ | ✓ | ✓ | ✓ | ✓ | ✓ | ✓ | ✓ | ✓ | ✓ | ✓ | ✓ | ✓ |
| 2 | WA7DH | 188 | Dave | Holten | Bonner | 1: North | DEC | | | | | | | | | | | | | | | | | | | | | | | | | | | | | | | | |
| 3 | K7ELM | 499 | Edwin | Martin | Boundary | 1: North | OP | ✓ | ✓ | ✓ | | | ✓ | ✓ | ✓ | | | ✓ | | | | ✓ | ✓ | ✓ | | | | | | | | | | | | | | | |
| 4 | KF7QNS | 165 | Helen | Meier | Boundary | 1: North | OP | | | | | | | | | | | | | | | ✓ | | ✓ | ✓ | | | | | | | | | | | | | | |
| 5 | KF7QZU | 164 | Mary | Dehaan | Boundary | 1: North | OP | | | | | | | | | | | | | | | | | | | | | | | | | | | | | | | | |
| 6 | N6SXR | 161 | Kirk | Dehaan | Boundary | 1: North | OP | | | | | | | | | | | | | | | ✓ | ✓ | ✓ | | | | | | | | | | | | | | | |
| 7 | N7HO | 47 | Steve | Steele | Boundary | 1: North | OP | ✓ | | | | | | | | | | | | | | ✓ | | | | | | | | | | | | | | | | | |
| 8 | WB7RBH | 84 | Michael | Meier | Boundary | 1: North | SEC | | | | | | | ✓ | ✓ | ✓ | | | ✓ | | | ✓ | ✓ | ✓ | | | | | | | | | | | | | | | |
| 9 | AI7H | 7 | Edward | Stuckey | Kootenai | 1: North | SM | ✓ | | | | | | | | | | | | | | ✓ | | | | | | | | | | | | | | | | | |
| 10 | K7CGA | 371 | Robert | Kesson | Kootenai | 1: North | OP | ✓ | | | | | | | | | | | | | | ✓ | | | | | | | | | | | | | | | | | |
| 11 | KF7OLE | 370 | David | Stelly | Kootenai | 1: North | OP | ✓ | ✓ | ✓ | | | | | | | | | | | | ✓ | ✓ | ✓ | | | | | | | | | | | | | | | |
| 12 | KT7I | 262 | Richard | Vanlandingham | Kootenai | 1: North | CAEC | | | | | | | | | | | | | | | ✓ | | | | | | | | | | | | | | | | | |
| 13 | KM2D | 206 | Robert | Schaff | Kootenai | 1: North | CEC | | | | | | | | | | | | | | | | | | | | | | | | | | | | | | | | |
| 14 | N7BRB | 62 | Bill | Boyles | Kootenai | 1: North | OP | | | | | | | | | | | | | | | ✓ | ✓ | ✓ | | | | | | | | | | | | | | | |
| 15 | N7DHL | 207 | Gary | Holland | Kootenai | 1: North | OP | | | | | | | | | | | | | | | ✓ | | | | | | | | | | | | | | | | | |
| 16 | W7RNX | 532 | Joseph | Wallace | Shoshone | 1: North | OP | | | | | | | | | | | | | | | ✓ | | | | | | | | | | | | | | | | | |
| TOTALS | | | | | | | | 6 | 3 | 4 | 1 | 5 | 6 | 3 | 4 | 1 | 8 | 2 | 14 | 7 | 7 | 1 | 9 | 2 | | | | | | | | | | | | | | | |

| HF DIGITAL MODE CAPABILITIES SUMMARY | | |
|---|-------|------------------|
| DESCRIPTION | TOTAL | PERCENT OF TOTAL |
| Total number of HF operators with digital capability: | 16 | 100.0 % |
| Total number of HF portable station operators with PSK capability: | 6 | 37.5 % |
| Total number of HF portable station operators with MT63 capability: | 3 | 18.8 % |

9:23 PM
5/12/2016

New Idaho ARES Website and Database

Test Cloning

Copy to Pacific Section 02/16:

Adjusted to fit their environment

Operational 04/16

New Idaho ARES Website and Database

Does One Size Fit All?

Probably Not

Currently No National ARES Standard

Others May Have Different Hierarchy

Different ARES Management Philosophy

“Unknown unknowns”

New Idaho ARES Website and Database

Your Questions?

Ed Stuckey (AI7H) – Idaho ARRL Section Manager
ai7h@arrl.net

Mike Meier (WB7RBH) – Idaho ARRL SEC
wb7rbh@arrl.net

