

# Gathering Music

“The Proposal / The Night Was Alive  
With a Thousand Voices.”

From: “Titanic: A New Musical” (1997)

Music & Lyrics by Maury Yeston

Brian D'Arcy James as Stoker Frederick Barrett

Martin Moran as Wireless Operator Harold Bride

# Welcome to

SEA  PAC<sup>®</sup>

Presentation: “Summits On The Air – in  
Hiking Boots or Bathrobe”

Andrew Ellis, NO6E



# Summits On The Air

Begun in 2002, SOTA is an operating activity. “Activators” make contacts from mountaintops with “Chasers.”

# Chaser

vs.

# Activator

In your den

On a cold/rainy/windy mountain

Bathrobe.

Hiking boots, rain gear, coat

Cold "807"

Enough water so you don't die.

Whatever you got!

Weak radio, crummy antenna

"Don't bother me. SOTA!"

"Here's where to find my body"

Table, shelf or custom console

In the dirt

Stool, chair or recliner.

In the dirt

Might not get the contact.

Death

So...it's not “Better”  
to be an activator  
or a chaser.

SOTA needs both!

# Rules for Activators:

Have Permission to be at the site.

No connection or proximity to a motor vehicle.

Be on a recognized SOTA peak, within 25M of summit.

Carry all your gear

Only battery or solar power allowed.

The “Ref” is the reference number assigned by SOTA

Here's how it works for Onion Mountain, Oregon:

Example:

“Association”

W7O

+

“Region”

“SC” for South Coastal

+

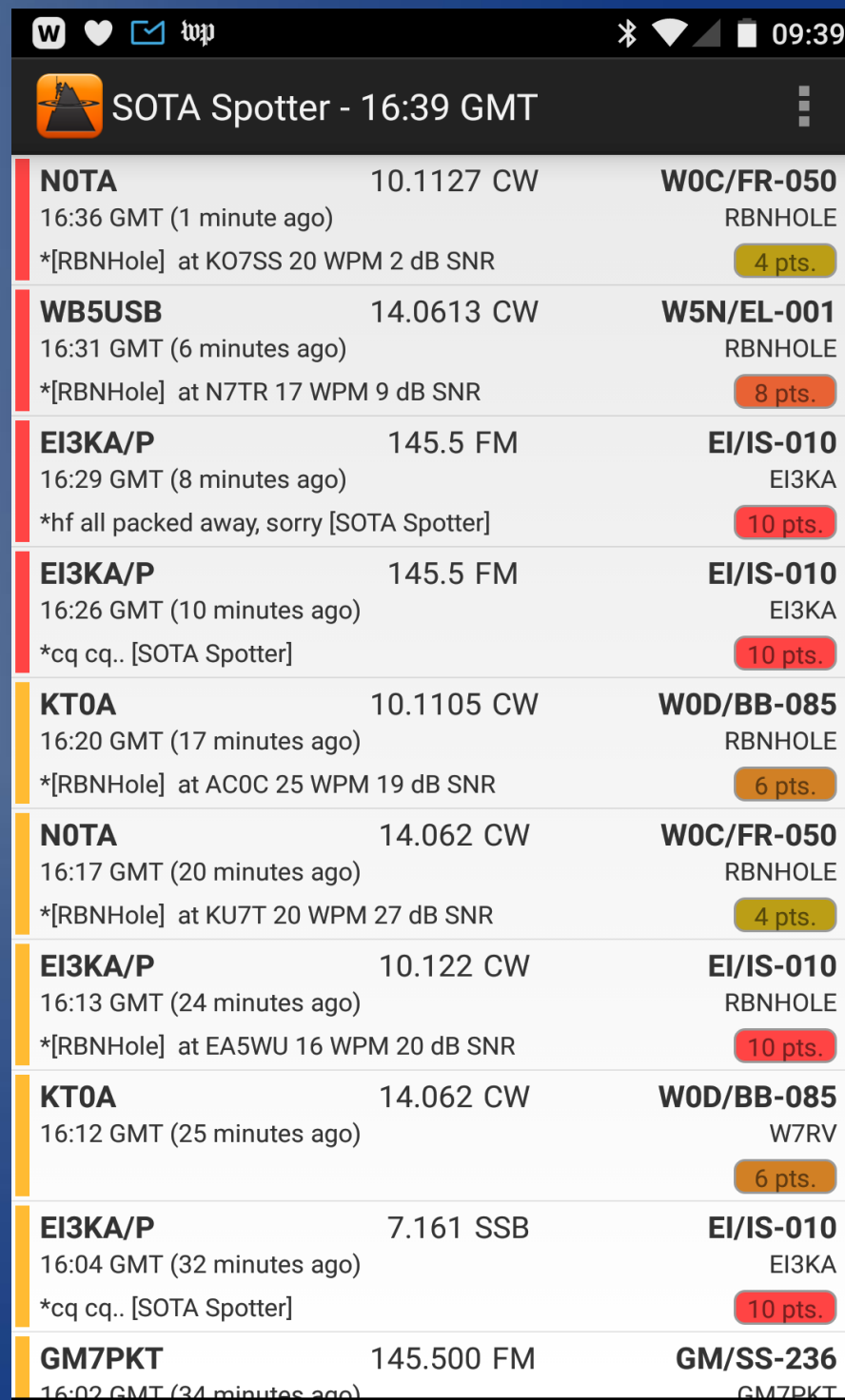
Summit Number

048

So, for Onion Mountain: W7O/SC-048

# Making your first SOTA CONTACT

## HOW TO FIND A CONTACT



The screenshot shows the SOTA Spotter app interface. At the top, there's a status bar with icons for WhatsApp, heart, envelope, and a signal strength indicator, along with the time 09:39. Below that is the app title "SOTA Spotter - 16:39 GMT" and a menu icon. The main content is a list of contacts, each with a call sign, frequency, mode, time, and score. The contacts are color-coded by frequency: red for 10.1127 MHz, orange for 14.0613 MHz, yellow for 145.5 MHz, and blue for 10.1105 MHz, 14.062 MHz, and 7.161 MHz.


Call Sign	Frequency	Mode	Time	Score
<b>NOTA</b>	10.1127	CW	16:36 GMT (1 minute ago)	4 pts.
*RBNHole] at KO7SS 20 WPM 2 dB SNR				
<b>WB5USB</b>	14.0613	CW	16:31 GMT (6 minutes ago)	8 pts.
*RBNHole] at N7TR 17 WPM 9 dB SNR				
<b>EI3KA/P</b>	145.5	FM	16:29 GMT (8 minutes ago)	10 pts.
*hf all packed away, sorry [SOTA Spotter]				
<b>EI3KA/P</b>	145.5	FM	16:26 GMT (10 minutes ago)	10 pts.
*cq cq.. [SOTA Spotter]				
<b>KT0A</b>	10.1105	CW	16:20 GMT (17 minutes ago)	6 pts.
*RBNHole] at AC0C 25 WPM 19 dB SNR				
<b>NOTA</b>	14.062	CW	16:17 GMT (20 minutes ago)	4 pts.
*RBNHole] at KU7T 20 WPM 27 dB SNR				
<b>EI3KA/P</b>	10.122	CW	16:13 GMT (24 minutes ago)	10 pts.
*RBNHole] at EA5WU 16 WPM 20 dB SNR				
<b>KT0A</b>	14.062	CW	16:12 GMT (25 minutes ago)	6 pts.
W7RV				
<b>EI3KA/P</b>	7.161	SSB	16:04 GMT (32 minutes ago)	10 pts.
*cq cq.. [SOTA Spotter]				
<b>GM7PKT</b>	145.500	FM	16:02 GMT (34 minutes ago)	
GM7PKT				



# DETAIL OF FIRST SPOT

W ❤️ ✉️ wp

📶 🔋 09:39

 SOTA Spotter - 16:39 GMT

<b>NOTA</b> 16:36 GMT (1 minute ago) *[RBNHole] at K07SS 20 WPM 2 dB SNR	10.1127 CW	<b>W0C/FR-050</b> RBNHOLE 4 pts.
<b>WB5USB</b> 16:31 GMT (6 minutes ago)	14.0613 CW	<b>W5N/EL-001</b> RBNHOLE

# Making Your First Chaser Contact

Activator:

Chaser:

CQ CQ SOTA de NO6E

NO6E de K7ATN

K7ATN 599 on W7O/SC-048

NO6E R 339 OR

R 73



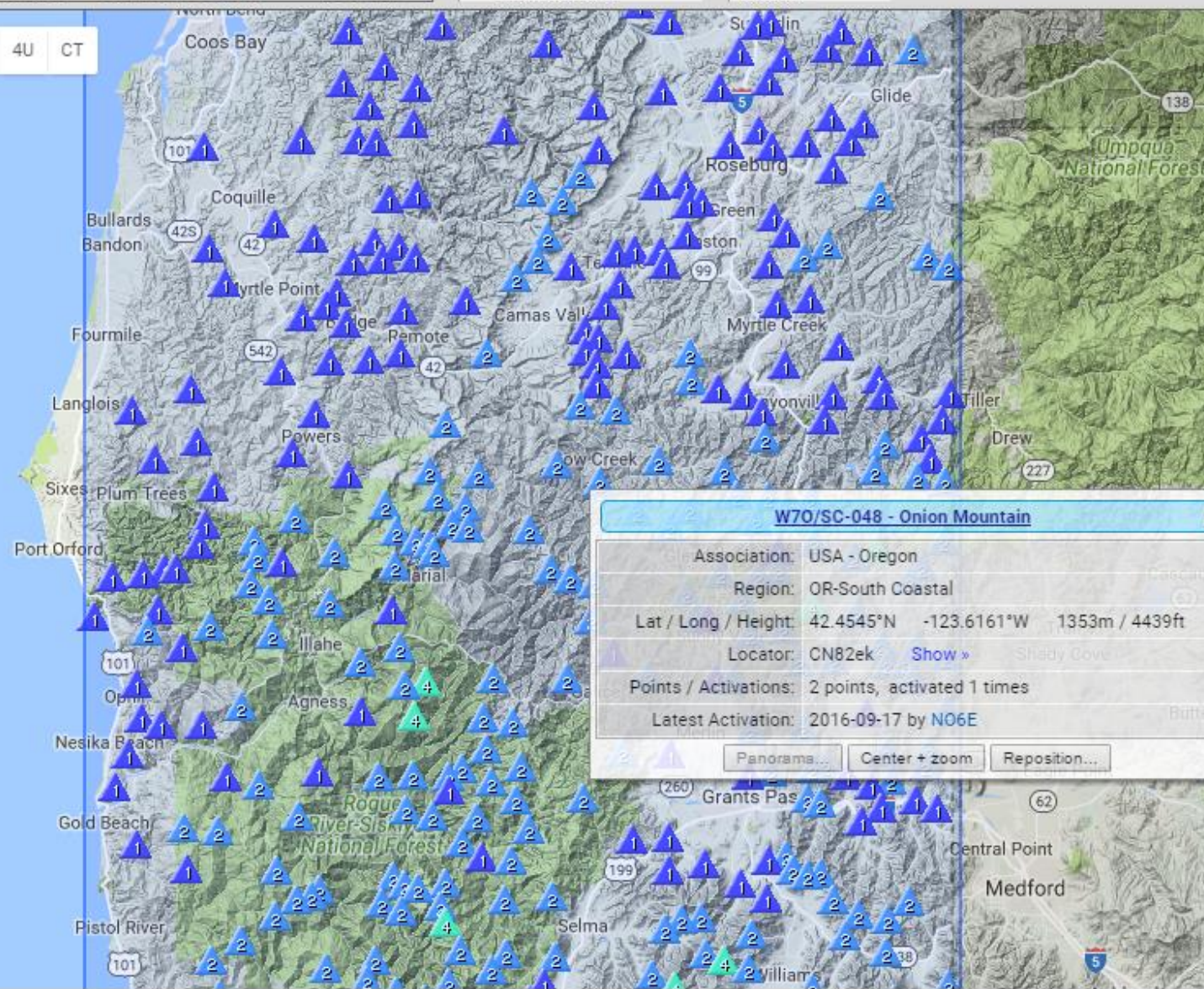
Choose Association:  Multi  W70 - USA - Oregon

Choose Region:  Multi  W70/SC - OR-South Coastal (382 sum)

Choose Summit: --- Please choose ---

Sort Summits: By code

Map Satellite OSM OC OT 4U CT



**W70/SC-048 - Onion Mountain**

Association:	USA - Oregon
Region:	OR-South Coastal
Lat / Long / Height:	42.4545°N -123.6161°W 1353m / 4439ft
Locator:	CN82ek <a href="#">Show »</a>
Points / Activations:	2 points, activated 1 times
Latest Activation:	2016-09-17 by NO6E

Panoramas... Center + zoom Reposition...













NOGE HILLTOPPER LOG

UNIT DATE: 12/24/2016  
5.59 GND NO BENE C/VG2 R4  
HANDBOOK UNIT DATE UNIT EX GND NO EX

UNIT	DATE	UNIT EX	GND NO EX
1	12/24/2016	1	1
2	12/24/2016	2	2
3	12/24/2016	3	3
4	12/24/2016	4	4
5	12/24/2016	5	5
6	12/24/2016	6	6
7	12/24/2016	7	7
8	12/24/2016	8	8
9	12/24/2016	9	9
10	12/24/2016	10	10
11	12/24/2016	11	11
12	12/24/2016	12	12
13	12/24/2016	13	13
14	12/24/2016	14	14
15	12/24/2016	15	15
16	12/24/2016	16	16
17	12/24/2016	17	17
18	12/24/2016	18	18
19	12/24/2016	19	19
20	12/24/2016	20	20
21	12/24/2016	21	21
22	12/24/2016	22	22
23	12/24/2016	23	23
24	12/24/2016	24	24
25	12/24/2016	25	25
26	12/24/2016	26	26
27	12/24/2016	27	27
28	12/24/2016	28	28
29	12/24/2016	29	29
30	12/24/2016	30	30
31	12/24/2016	31	31
32	12/24/2016	32	32
33	12/24/2016	33	33
34	12/24/2016	34	34
35	12/24/2016	35	35
36	12/24/2016	36	36
37	12/24/2016	37	37
38	12/24/2016	38	38
39	12/24/2016	39	39
40	12/24/2016	40	40
41	12/24/2016	41	41
42	12/24/2016	42	42
43	12/24/2016	43	43
44	12/24/2016	44	44
45	12/24/2016	45	45
46	12/24/2016	46	46
47	12/24/2016	47	47
48	12/24/2016	48	48
49	12/24/2016	49	49
50	12/24/2016	50	50



# Heading Out! What do I need?

Clothing: Hat, rain gear, hiking boots

Provisions: Water, food, first aid kit

Radios: HF, VHF, cell phone

Antennas, HF, VHF with launch gear

Accessories: Key, Mic, Log, Pencil

Alerting: Cell data, SMS, APRS

Safety Notification.





Photo group  
[https://www.flickr.com/groups/sota\\_pics/](https://www.flickr.com/groups/sota_pics/)

Home Logon/Logoff View Results Summits Submit Log FAQ

## 50 Most Popular Summits

SOTA Ref	Name	Alt (Metres)	Alt (Feet)	Points	No. of Activations	Last Activation	Last Call
G/SP-015	The Cloud	343	1125	1	1135	17/Aug/2015	G2HFR/P
HB/ZH-015	Altberg	631	2070	1	730	22/Aug/2015	HB9BAB/P
G/SP-004	Shining Tor	559	1834	2	633	15/Aug/2015	M0JQC/P
G/SP-013	Gun	385	1263	1	619	24/Aug/2015	2E0YYY/P
LA/TM-049	Holtankollen	253	830	1	522	16/Apr/2015	LA1TPA/P
GW/NW-051	Foel Fenli	511	1676	2	407	12/Aug/2015	GW2HFR/P
GW/NW-044	Moel Famau	554	1818	2	381	08/Aug/2015	GW0EVV/P
G/WB-004	Titterstone Clee Hill	533	1749	2	341	02/Aug/2015	M6ZXH
G/WB-005	Long Mynd - Pole Bank	517	1695	2	340	13/Aug/2015	G4AZS/P
G/SP-005	Pendle Hill	557	1827	2	333	12/Jul/2015	G4TJC/P
G/NP-010	Pen-y-ghent	694	2277	4	327	17/Aug/2015	GX0000/P
GW/NW-042	Moel y Gamelin	578	1896	2	306	03/Aug/2015	GW0WPO/QRP
G/LD-049	Kirkby Moor	334	1096	1	297	16/May/2015	M1AVV/P
G/WB-003	Stiperstones	537	1761	2	293	06/Aug/2015	G4TQE/P
G/SP-001	Kinder Scout	636	2088	4	291	15/Aug/2015	M0JQC/P
G/NP-005	Ingleborough	724	2375	6	290	14/Jul/2015	M0VCM/P
GW/NW-043	Cyrn-y-Brain	565	1853	2	285	31/Jul/2015	GW0WPO/QRP
G/LD-050	Gummer's How	321	1053	1	272	15/Jul/2015	G6ODU/P
G/NP-004	Wherside	736	2415	6	271	19/Aug/2015	G0EVV/P

Database [sotadata.org.uk](http://sotadata.org.uk)

Reflector  
[reflector.sota.org.uk](http://reflector.sota.org.uk)



This page refreshes every 1 minute. Last updated **04:51:53 UTC**.

## Latest Spots

>> [more](#)

- Wed 04:32** **VK2JDL** on [VK2/MN-081](#) **7.00**  
\*calling CQ [via SOTA Goat] (Posted by VK2JDL)
- Wed 04:13** **VK5NHG/P** on [VK5/SE-007](#) **7.10**  
calling cq (Posted by VK5NHG)
- Wed 04:01** **VK2TWR/P** on [VK2/SM-064](#) **7.00**  
\*cq cq (via RRT) (Posted by VK2IO)
- Wed 03:49** **VK2IO/P** on [VK2/SM-064](#) **14.00**  
On air now, easy copy in Perth, Tnx Gerard. (Posted by VK6NU)
- Wed 03:42** **VK2IO/P** on [VK2/SM-064](#) **14.00**  
\*arv in 30 mins (via RRT) (Posted by VK2IO)

# Sotawatch

[www.sotawatch.org](http://www.sotawatch.org)

# Sotamaps

<https://sotamaps.org>

The screenshot shows the Sotamaps website interface. At the top, there are navigation tabs: main, range, tracks, alerts, spots, extras, contact, about. Below this, there are dropdown menus for 'Choose Association' (set to EA3 - Spain (Catalunya)), 'Choose Region' (set to 043/02 - Girona (39 Summits)), 'Choose Summit' (set to Please choose...), and 'Sort Summits' (set to By code). A 'Map' button and 'Satellite' view option are visible. The main content area is a map of the Pyrenees region with various colored markers (red, yellow, blue, green) indicating different summits. On the left, there is a 'Choose Summits Listing' table with columns for Summit Code, Summit Name, Act, and Pts.

Summit Code	Summit Name	Act	Pts
EA3/01-011	Puj Pedró	2	10
EA3/01-012	Puigmal	3	10
EA3/01-013	Pic de Bastiments	1	10
EA3/01-014	Pic de l'Àncora	0	10
EA3/01-015	Pic de Nou Anys	1	10
EA3/01-016	Pic de Pinetelles	1	10
EA3/01-017	Ora de Fayol	1	8
EA3/01-018	Tornavieses	1	8
EA3/01-019	Pastura	0	8
EA3/01-020	Belandier	1	8
EA3/01-021	Tross D'Alp	3	8
EA3/01-022	Corbore	1	8
EA3/01-024	Taga	2	8
EA3/01-025	Puj Elnak	1	8
EA3/01-026	Maragats	3	4
EA3/01-027	Gorra Negra	1	4
EA3/01-028	Santa Magdalena de Cambils	1	4
EA3/01-029	Puj Sacalm	2	4
EA3/01-030	Pic de l'Àncora	0	2
EA3/01-031	Sant Andreu	0	2
EA3/01-032	Sant Andreu	1	2
EA3/01-033	Sant Andreu	1	2

# Sota Shop

[sota-shop.co.uk](http://sota-shop.co.uk)

## Summits on the Air



Home » Trophies

[checkout](#)



Mountain Goat

In Stock: -1

Mountain Goat - 9cm x 9cm engraved "Ice Block"

Callign:

Award Date:

Additional Information:

Price: £29.50

€4.55 USD \$7.79 EUR \$4.58 AUD



Shack Slith

In Stock: 0

Shack Slith Trophy - 9cm x 9cm Engraved "Ice Block"

Callign:

Award Date:

Additional Information:

Price: £29.50

€4.55 USD \$7.79 EUR \$4.58 AUD

# SOTA Logging:

logon

Not secure | www.sotadata.org.uk/logon.aspx?returnurl=addChaser.aspx

Home Logon/Logoff ▶ View Results ▶ Summits ▶ Submit Log ▶ FAQ

## Logon To Sota

Before you can access certain pages in the SOTA website, you need to register or log-on so that we can identify you.

If you have not already registered for SOTA (it's free!), you need to fill in the [on-line registration form](#).

If you've already registered, please enter your username and password into the boxes below and press the Logon button.

Username

Password

Please note that a session cookie will be placed on your computer when you log on to this website. If you do not want the cookie then do not log on to this website.

Don't have a username? Click [Here](#) to register.

Forgotten your Username? [Remind Me](#)

Forgotten your Password? [Email me a new one](#)

logon x

← → ↻ ⓘ www.sotadata.org.uk/logon2.aspx?ReturnURL=addChaser.aspx

Home Logon/Logoff ▶ View Results ▶ Summits ▶ Submit Log ▶ FAQ

# Logon To Sota

## Welcome To SOTA!

We currently have the following details recorded for you:-

User ID: NO6E  
Real Name: Andrew Ellis  
Callsign: NO6E  
Email Address: radioalbany@ymail.com  
Home Association: W7O - USA - Oregon

[Edit Details](#) [Change Password](#)

Activator points: You currently have a total of 32 points  
(32 Points plus 0 Bonus Points)

Chaser points: You currently have a total of 917 points

- Submit Activator Entry
- Import Activator TSV/CSV
- Submit Chaser/S2S/SWL Entry
- Import Chaser/S2S/SWL TSV/CSV

## Logon To Sota

Welcome To SOTA!

We currently have the following details recorded for you:-

**User ID:** NO6E  
**Real Name:** Andrew Ellis  
**Callsign:** NO6E  
**Email Address:** radioalbany@gmail.com  
**Home Association:** W7O - USA - Oregon

[Edit Details](#) [Change Password](#)

Activator points: You currently have a total of 32 points  
(32 Points plus 0 Bonus Points)

Chaser points: You currently have a total of 917 points

## Submit Chaser/S2S/SWL Ent

### a. Select the Association, Region and Summit chase

Association:	W7O - USA - Oregon ▼
Region:	NC (OR-North Coastal) ▼
Summit:	W7O/NC-002 (Saddle Mountain) ▼

### b. Enter QSO Details

Date (dd/mm/yy)	
Time UTC (hh:mm)	
Callsign/SWL YOU used	
Other Callsign	
Band	--Select Band-- ▼
Mode	--Select Mode-- ▼
Notes	
S2S	<input type="checkbox"/> Is QSO S2S?
SWL	<input type="checkbox"/> Is QSO SWL?



## Submit Activation Log

### d. Add Details of all QSOs

Enter each QSO in turn in the form below. After entering each QSO, press the "ADD" button. You can see the QSOs entered so far

Time (UTC)	Callsign	Band	Mode	Notes
<input type="text" value="20:47"/>	<input type="text" value="AE9F"/>	<input type="text" value="10MHz"/>	<input type="text" value="CW"/>	<input type="text"/>
<input type="button" value="ADD"/>				

When all QSOs have been entered, scroll down to the bottom of the page, check your entries and press the FINISH button.

### QSOs entered so far

Time	Callsign	Band	Mode	Notes	Delete
20:06	N4EX	14MHz	CW		<a href="#">Delete</a>
20:09	KE5AKL	14MHz	CW	S2S: W5N/PW-027	<a href="#">Delete</a>
20:11	AC1Z	14MHz	CW		<a href="#">Delete</a>
20:13	NF7P	14MHz	CW		<a href="#">Delete</a>
20:14	W7RV	14MHz	CW		<a href="#">Delete</a>
20:15	NE4TN	14MHz	CW		<a href="#">Delete</a>
20:16	K7JFD	14MHz	CW		<a href="#">Delete</a>
20:18	NB1ZT	14MHz	CW		<a href="#">Delete</a>
20:20	KR7KK	7MHz	CW	S2S: W7A/PN-008	<a href="#">Delete</a>
20:30	WB7VTY	7MHz	CW		<a href="#">Delete</a>
20:32	K6EL	7MHz	CW		<a href="#">Delete</a>
20:33	W6JMP	7MHz	CW		<a href="#">Delete</a>
20:34	N7KLN	7MHz	CW		<a href="#">Delete</a>
20:37	AI6CU	7MHz	CW	S2S: W6/NC-417	<a href="#">Delete</a>
20:39	WW7D	7MHz	CW		<a href="#">Delete</a>

## Submit Chaser/S2S/SWL Entry

### a. Select the Association, Region and Summit chased

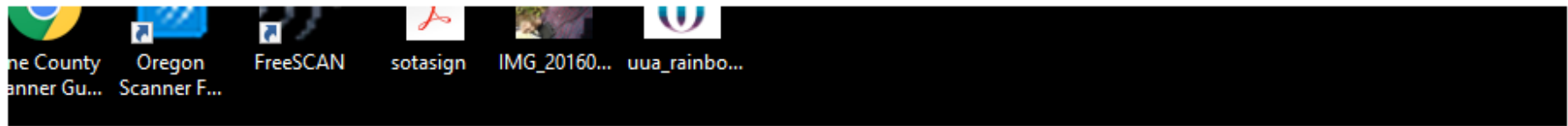
Association:	W5N - USA - New Mexico ▼
Region:	PW (Pecos Wilderness) ▼
Summit:	W5N/PW-027 (8409) ▼

### b. Enter QSO Details

Date (dd/mm/yy)	11/02/2017
Time UTC (hh:mm)	20:09
Callsign/SWL YOU used	NO6E
Other Callsign	KE5AKL
Band	14MHz ▼
Mode	CW ▼
Notes	
S2S	<input checked="" type="checkbox"/> Is QSO S2S?
SWL	<input type="checkbox"/> Is QSO SWL?

### c. Select your Association, Region and Summit

Association:	W7O - USA - Oregon ▼
Region:	CC (OR-Central Coast) ▼
Summit:	W7O/CC-012 (Roman Nose Mountain) ▼



otadata.org.uk/chaserlog.aspx

[View Results](#) ▶ [Summits](#) ▶ [Submit Log](#) ▶ [FAQ](#)

# Chaser Log

## NO6E

Total Points (Last 6 Months)= 752

[Show Awards](#) [Download complete log](#)

Year filter :  Order :  [Show!](#)

Show Unconfirmed only:  Show Confirmations:  Show Analysis:

Date	Time	My Callsign	Station Worked	Summit	Summit Name	Band	Mode	Points	Total
13/Aug/2016	20:13	NO6E	KX0R	W0C/SP-100	Mexican Ridge	10MHz	CW	4	4
13/Aug/2016	20:55	NO6E	W7GA	W7U/WA-015	8978	10MHz	CW	6	10
19/Aug/2016	17:01	NO6E	W0Y	W80/CT-001	Cambell Hill	14MHz	CW	4	14
19/Aug/2016	18:21	NO6E	K7BUY	W70/NE-227	5571	14MHz	SSB	4	18
20/Aug/2016	17:12	NO6E	NM5SW	W5N/CC-003	Capulin Peak	14MHz	CW	8	26
20/Aug/2016	17:38	NO6E	KQ6UP	W6/CT-205	Blue Mountain	14MHz	CW	1	27
20/Aug/2016	18:01	NO6E	KX0R	W0C/SR-046	Stanley Mountain	14MHz	CW	8	35
21/Aug/2016	19:07	NO6E	WC6J	W6/NS-389	Buzzard Roost	7MHz	SSB	8	43



- 🔗 [About pnwSOTA](#)
- 🔗 [How to Contribute](#)
- 🔗 [How to use Alerts](#)
- 🔗 [Getting Started](#)
- 🔗 [Recommended Summits](#)
- 🔗 [SOTA Resources](#)
- 🔗 [Downloads](#)
- 🔗 [PNW Summit Map](#)
- 🔗 [Trip Report Archives](#)
- 🔗 [pnwSOTA Alerts](#)
- 🔗 [PNW Mailing List](#)

**Activation Alerts**

No scheduled alerts

**User login**

Username: \*

## Welcome to the Pacific Northwest!

The pnwSOTA website was created to facilitate communication between the Pacific Northwest region, as well as show off some of the activities of the region. On this site you will find information about getting started in SOTA, trip reports, and activations contributed by people that are operating here.

## Powers-Less

Submitted by [NO6E](#) on Tue, 02/07/2017 - 17:30

The small town of Powers, OR looks promising for SOTA. Within a few miles along the Coquille river are three SOTA peaks, W7O/SC-149 (Woodb Mountain) and the unnamed W7O/SC-342. Powers itself is located on the east side of Highway 42, as it runs near Coquille, OR.

As I usually do, I tried to scout these locations today. Each was either "No Trespassing."

➤ [Read more](#)

## Mount Harrison, Idaho by K7ZO | No

# Is SOTA “Fair?”

“It's not Cricket!”

SOTA rules for summits

SOTA rules for activators

SOTA rules for chasers

# The Elephant in the SOTA Room: CW

CW is not a requirement

CW is the most widely-used mode on SOTA. Why?

What *kind* of CW is it?

Will they laugh at me?

What about those slashes and dashes in the reference numbers?

# I'm NOT bringing my Home Rig! (Nor am I!)

ELECRAFT KX2



YAESU FT-817ND



HENDRICKS PFR-3B



YOUKITS HB1B



# Yes, I know: Antenna Tuners Don't Tune the Antenna!



The LDG Z-817 is an automatic tuner made for use with the FT-817.

The Elecraft T2 is a QRP tuner that can work with many rigs



The SOTA Tuner from QRP Kits is a manual tuner and swr indicator



# Tennis Ball Antenna Launcher

## Materials:

- 1 Tennis Ball
- 1 foot (30 cm) Paracord
- Utility Knife
- Long-nose pliers

Cut a 1.5" (4 cm) slit

On opposite sides,  
cut 2 "X-shaped" slits  
about 1/4" (0.5mm)

Push each end of cord  
into X-slits.



Squeeze to open the long slit. Pull both cord ends out through the slit.

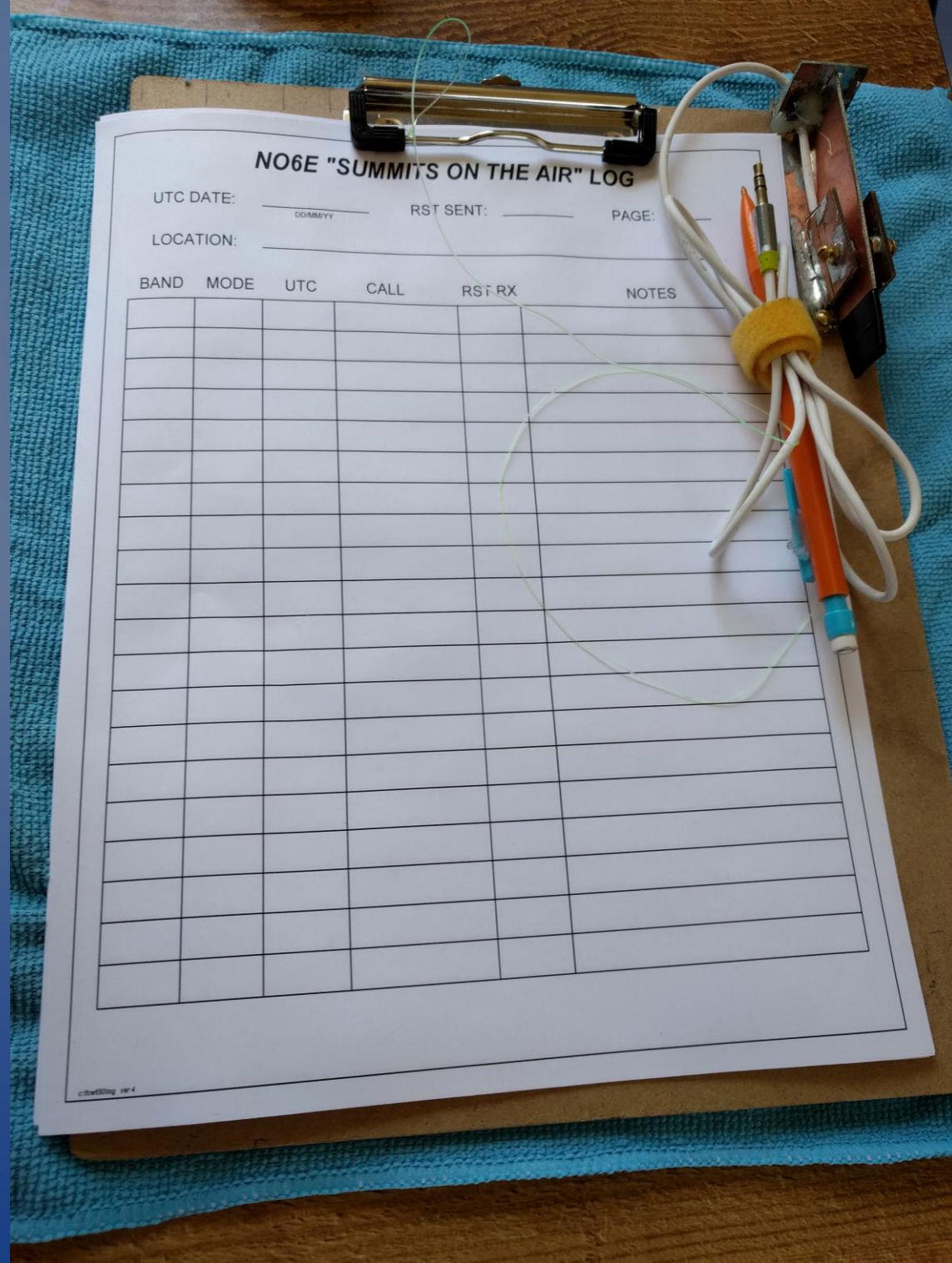
Tie the two ends together and tuck them back inside.

Option: Add a few pebbles or coins to add weight.

Tie fishing line to loop.



How to avoid losing  
your clipboard, pencil  
and paddle.



# The CheapLIGHT Porta-Paddle

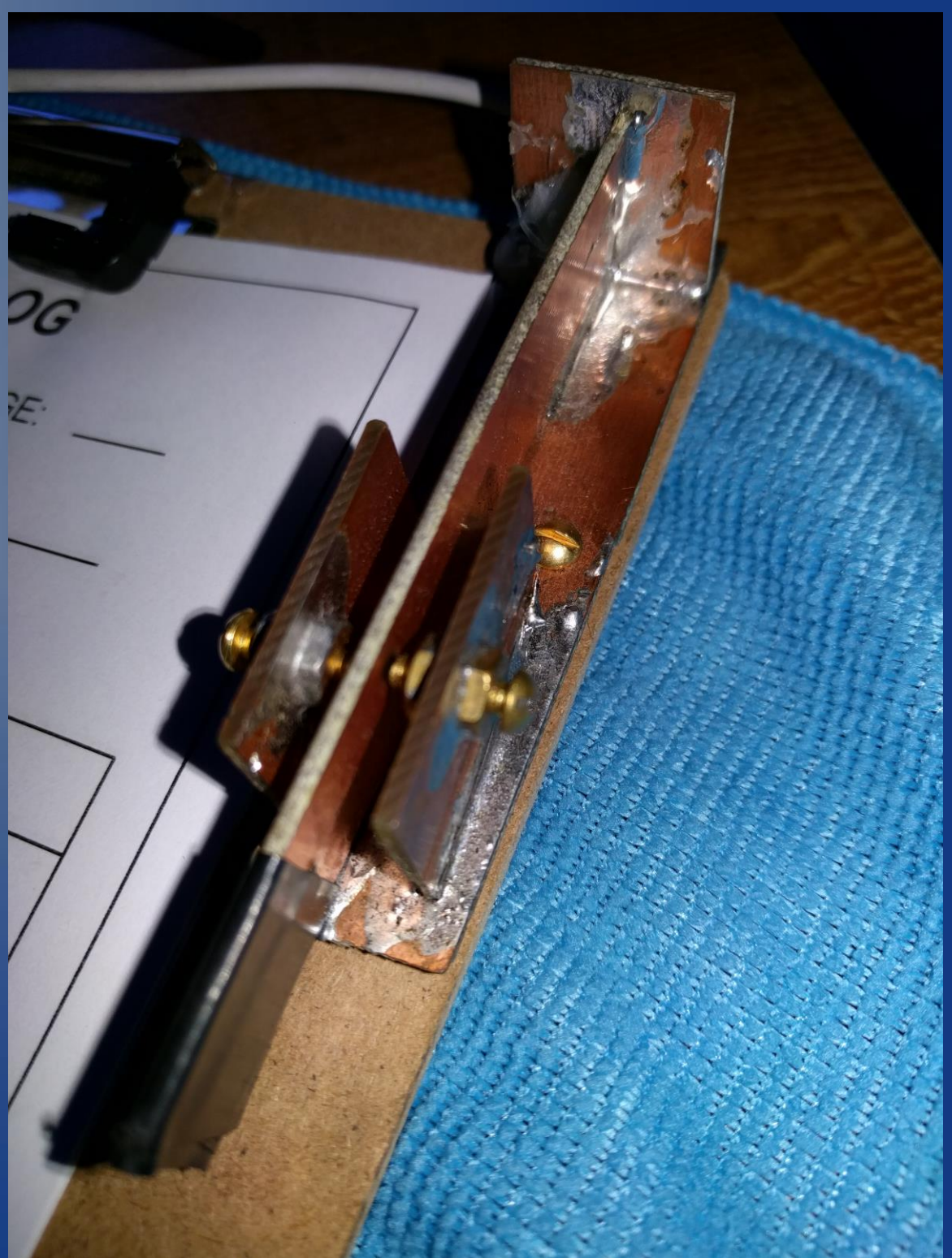
## Materials:

1/16" x 6" x 6"  
Double-clad  
FR4 PCB stock

1 6' 3.5 mm male-male  
patch cord

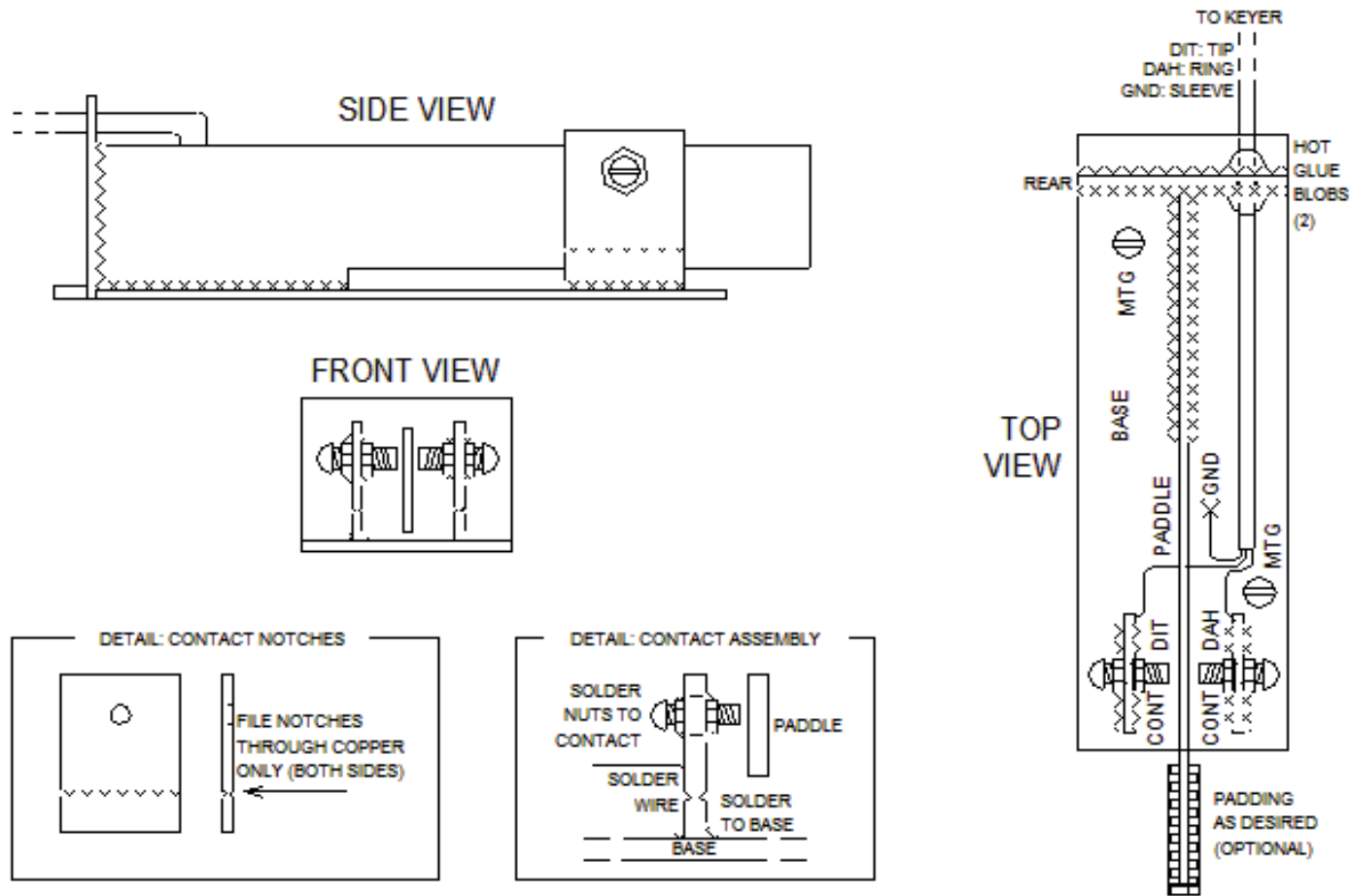
4-40x3/8" brass machine  
screws and 4-40 brass  
nuts

Soldering iron, solder,  
tin snips.



# CheapLIGHT Porta-Paddle cutting and assembly.

## THE CHEAPLIGHT PADDLE



~~~~~ SOLDER FILLETS  
 ⊕ .125" DIA HOLE, 5 PLACES

1.000

**ROGUE FARM ENGINEERING**  
 ROGUE RIVER, OREGON

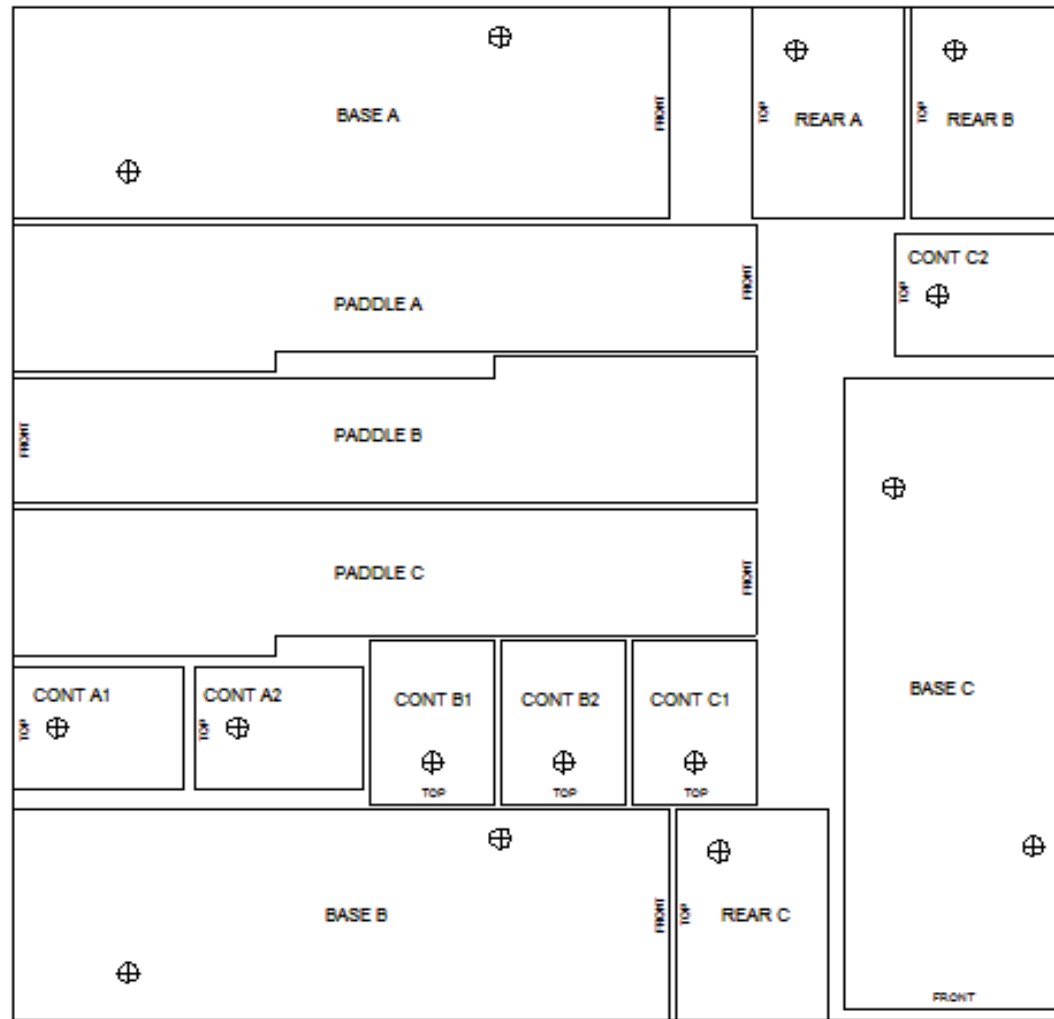
NOSE PCB KEY PADDLE  
 ASSEMBLY DRAWING

|                              |                   |
|------------------------------|-------------------|
| DESIGNED BY:<br>ANDREW ELLIS | DATE:<br>2/3/2018 |
| DRAWN BY:<br>ANDREW ELLIS    | DATE:<br>2/3/2018 |

|     |             |     |
|-----|-------------|-----|
| REV | DESCRIPTION | REV |
| A   | PADASIL.FOI | H   |

SCALE: ACTUAL SIZE SHEET 1 OF 1

# CheapLIGHT 6x6 Cutting Diagram



| QTY | ITEM                                                                                                     |
|-----|----------------------------------------------------------------------------------------------------------|
| 1*  | 6" x 6" x 1/16" FR-4<br>DOUBLE-CLAD PCB STOCK<br>MG CHEMICALS PART: 550<br>DIGIKEY ELECTRONICS: 473-1006 |
| 2** | 3.5 mm x 6' STEREO PATCH CORD<br>MONOPRICE # 644                                                         |
| 4   | 4-40 x 3/8" BRASS MACHINE SCREWS                                                                         |
| 6   | 4-40 BRASS NUTS                                                                                          |
|     | * - SUFFICIENT FOR 3 PADDLES                                                                             |
|     | ** - SUFFICIENT FOR 2 PADDLES                                                                            |

⊕ 1/8" (3.2MM) HOLE

## THE CHEAPLIGHT PADDLE

CREATIVE COMMONS LICENSE

**ROGUE FARM ENGINEERING**  
ROGUE RIVER, OREGON

NOSE PCB KEY PADDLE  
PADDLE PCB CUTTING PATTERN

|                              |                    |             |                    |
|------------------------------|--------------------|-------------|--------------------|
| DESIGNED BY:<br>ANDREW ELLIS | DATE:<br>12/3/2016 | REV:        | K                  |
| DRAWN BY:<br>ANDREW ELLIS    | DATE:<br>12/3/2016 | SCALE:<br>A | SCALE: ACTUAL SIZE |
|                              |                    | SHEET 1     | OF 1               |

# A Dangerous Digression:

It's too big and heavy for SOTA, but the tennis balls can also launch wire antennas over really BIG trees, say, 200 feet or so.

Powered by flammable hair spray, this none-too-safe "Tennis Ball Cannon" can do the job!

I'm not recommending it!  
If you try it,  
you're on your own!



Thank you for coming! Enjoy the rest of SEAPAC!



Special Thanks: Etienne K7ATN

Delvin N7QMT

Phil NS7P

John KE7WNB

All SEAPAC Volunteers

Created using Apache Open Office 4: [www.openoffice.org](http://www.openoffice.org)

email Andrew



Andrew's  
blog



SEAPAC website



[creativecommons.org](http://creativecommons.org)

